



[Go to Product page](#)

Datasheet for ABIN5014043  
**anti-PNP antibody (AA 1-286)**

2 Images

Overview

Quantity:	100 µL
Target:	PNP (NP)
Binding Specificity:	AA 1-286
Reactivity:	Mouse
Host:	Rabbit
Clonality:	Polyclonal
Conjugate:	This PNP antibody is un-conjugated
Application:	Western Blotting (WB), Immunohistochemistry (IHC), Immunocytochemistry (ICC)

Product Details

Immunogen:	NP (Met1-Asp286)
Isotype:	IgG
Specificity:	The antibody is a rabbit polyclonal antibody raised against NP. It has been selected for its ability to recognize NP in immunohistochemical staining and western blotting.
Purification:	Antigen-specific affinity chromatography

Target Details

Target:	PNP (NP)
Abstract:	<a href="#">NP Products</a>
Target Type:	Viral Protein

## Target Details

Background:	Alternative Names: PNP, PUNP, Purine Nucleoside Phosphorylase, Inosine phosphorylase, Inosine-guanosine phosphorylase
Pathways:	<a href="#">Regulation of Leukocyte Mediated Immunity</a> , <a href="#">Positive Regulation of Immune Effector Process</a> , <a href="#">Ribonucleoside Biosynthetic Process</a> , <a href="#">Positive Regulation of Response to DNA Damage Stimulus</a>

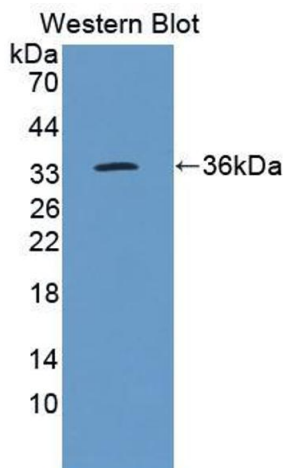
## Application Details

Application Notes:	<ul style="list-style-type: none"><li>Western blotting: 1:50-400 Immunocytochemistry in formalin fixed cells: 1:50-500 Immunohistochemistry in formalin fixed frozen section: 1:50-500 Immunohistochemistry in paraffin section: 1:10-100 Enzyme-linked Immunosorbent Assay: 1:100-1:5000 Optimal working dilutions must be determined by end user.</li></ul>
Comment:	The thermal stability is described by the loss rate. The loss rate was determined by accelerated thermal degradation test, that is, incubate the protein at 37&degC for 48h, and no obvious degradation and precipitation were observed. The loss rate is less than 5% within the expiration date under appropriate storage condition.
Restrictions:	For Research Use only

## Handling

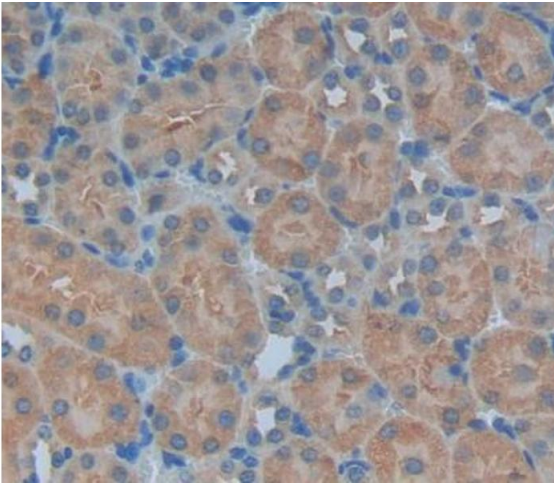
Format:	Liquid
Concentration:	Lot specific
Buffer:	PBS, pH 7.4, containing 0.02 % Sodium azide, 50 % glycerol.

## Images



### Western Blotting

**Image 1.** Figure. Western Blot; Sample: Recombinant protein.



### Immunohistochemistry

**Image 2.** Used in DAB staining on formalin fixed paraffin-embedded kidney tissue