

Datasheet for ABIN5014103
anti-PLA2G12A antibody (AA 23-189)[Go to Product page](#)

2 Images

Overview

Quantity:	100 µL
Target:	PLA2G12A
Binding Specificity:	AA 23-189
Reactivity:	Human
Host:	Rabbit
Clonality:	Polyclonal
Conjugate:	This PLA2G12A antibody is un-conjugated
Application:	Western Blotting (WB), Immunohistochemistry (IHC), Immunocytochemistry (ICC)

Product Details

Immunogen:	PLA2G12 (Gln23-Leu189)
Isotype:	IgG
Specificity:	The antibody is a rabbit polyclonal antibody raised against PLA2G12. It has been selected for its ability to recognize PLA2G12 in immunohistochemical staining and western blotting.
Purification:	Antigen-specific affinity chromatography

Target Details

Target:	PLA2G12A
Alternative Name:	Phospholipase A2, Group XII (PLA2G12) (PLA2G12A Products)
Background:	Alternative Names: PLA2G12A, sPLA2-XII, GXII sPLA2, Group XIIA secretory phospholipase A2,

Target Details

Phosphatidylcholine 2-acylhydrolase 12A

Pathways: [Inositol Metabolic Process](#)

Application Details

Application Notes:

- Western blotting: 1:50-400 Immunocytochemistry in formalin fixed cells: 1:50-500 Immunohistochemistry in formalin fixed frozen section: 1:50-500 Immunohistochemistry in paraffin section: 1:10-100 Enzyme-linked Immunosorbent Assay: 1:100-1:5000 Optimal working dilutions must be determined by end user.

Comment: The thermal stability is described by the loss rate. The loss rate was determined by accelerated thermal degradation test, that is, incubate the protein at 37°C for 48h, and no obvious degradation and precipitation were observed. The loss rate is less than 5% within the expiration date under appropriate storage condition.

Restrictions: For Research Use only

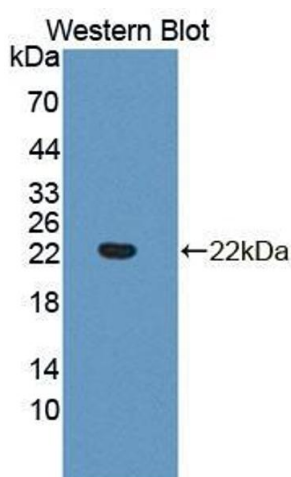
Handling

Format: Liquid

Concentration: Lot specific

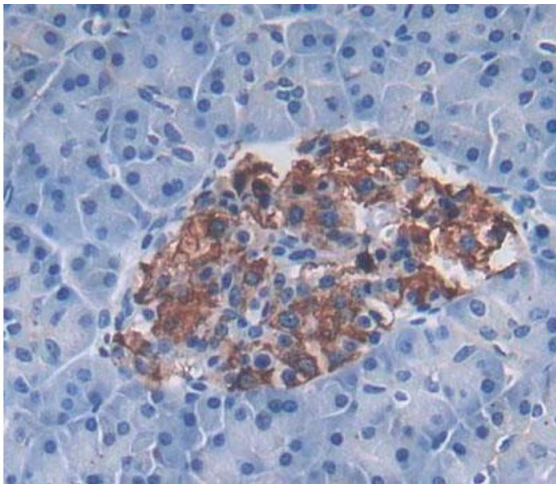
Buffer: PBS, pH 7.4, containing 0.02 % Sodium azide, 50 % glycerol.

Images



Western Blotting

Image 1. Figure. Western Blot; Sample: Recombinant protein.



Immunohistochemistry

Image 2. Used in DAB staining on formalin fixed paraffin-embedded pancreas tissue