

Datasheet for ABIN5014104  
**anti-pPLA2 antibody (AA 16-148)**

## 3 Images

[Go to Product page](#)

## Overview

Quantity:	100 µL
Target:	pPLA2
Binding Specificity:	AA 16-148
Reactivity:	Human
Host:	Rabbit
Clonality:	Polyclonal
Conjugate:	This pPLA2 antibody is un-conjugated
Application:	Immunohistochemistry (IHC), Western Blotting (WB), Immunocytochemistry (ICC)

## Product Details

Immunogen:	pPLA2 (Asp16-Ser148)
Isotype:	IgG
Specificity:	The antibody is a rabbit polyclonal antibody raised against pPLA2. It has been selected for its ability to recognize pPLA2 in immunohistochemical staining and western blotting.
Purification:	Antigen-specific affinity chromatography

## Target Details

Target:	pPLA2
Abstract:	<a href="#">pPLA2 Products</a>
Background:	Alternative Names: PLA2G1B, PLA2A, PPLA2, Phospholipase A2, Group IB, Group IB

## Target Details

phospholipase A2, Phosphatidylcholine 2-acylhydrolase 1B

## Application Details

Application Notes:

- Western blotting: 1:50-400 Immunocytochemistry in formalin fixed cells: 1:50-500 Immunohistochemistry in formalin fixed frozen section: 1:50-500 Immunohistochemistry in paraffin section: 1:10-100 Enzyme-linked Immunosorbent Assay: 1:100-1:5000 Optimal working dilutions must be determined by end user.

Comment:

The thermal stability is described by the loss rate. The loss rate was determined by accelerated thermal degradation test, that is, incubate the protein at 37°C for 48h, and no obvious degradation and precipitation were observed. The loss rate is less than 5% within the expiration date under appropriate storage condition.

Restrictions:

For Research Use only

## Handling

Format:

Liquid

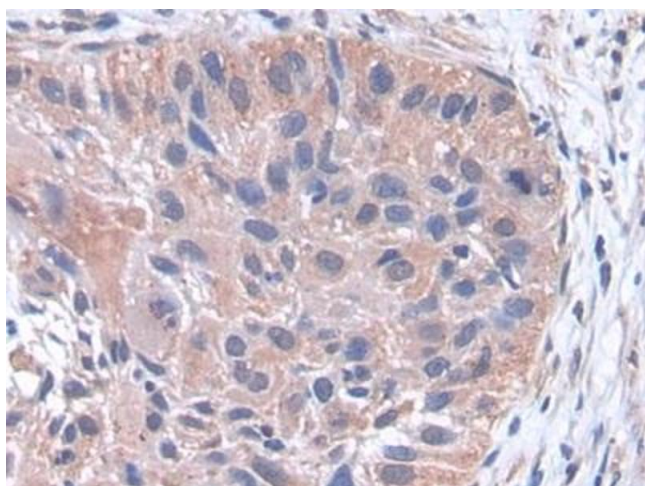
Concentration:

Lot specific

Buffer:

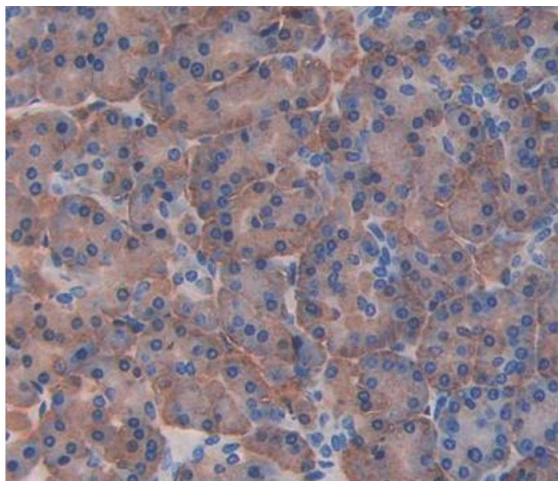
PBS, pH 7.4, containing 0.02 % Sodium azide, 50 % glycerol.

## Images



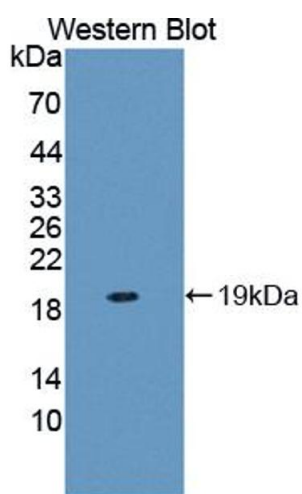
### Immunohistochemistry

**Image 1.** DAB staining on IHC-P; Samples: Human Lung cancer Tissue



#### Immunohistochemistry

**Image 2.** Used in DAB staining on formalin fixed paraffin-embedded Kidney tissue



#### Western Blotting

**Image 3.** Figure. Western Blot; Sample: Recombinant protein.