

Datasheet for ABIN5014113

**anti-Phospholipase C delta 3 antibody (AA 528-789)**[Go to Product page](#)**2** Images

## Overview

Quantity:	100 µL
Target:	Phospholipase C delta 3 (PLCd3)
Binding Specificity:	AA 528-789
Reactivity:	Human
Host:	Rabbit
Clonality:	Polyclonal
Conjugate:	This Phospholipase C delta 3 antibody is un-conjugated
Application:	Western Blotting (WB), Immunohistochemistry (IHC), Immunocytochemistry (ICC)

## Product Details

Immunogen:	PLCd3 (Leu528-Ser789)
Isotype:	IgG
Specificity:	The antibody is a rabbit polyclonal antibody raised against PLCd3. It has been selected for its ability to recognize PLCd3 in immunohistochemical staining and western blotting.
Purification:	Antigen-specific affinity chromatography

## Target Details

Target:	Phospholipase C delta 3 (PLCd3)
Abstract:	<a href="#">PLCd3 Products</a>
Background:	Alternative Names: PLC-delta-3, Phosphoinositide phospholipase C-delta-3, 1-

## Target Details

phosphatidylinositol 4,5-bisphosphate phosphodiesterase delta-3

Pathways: [WNT Signaling](#)

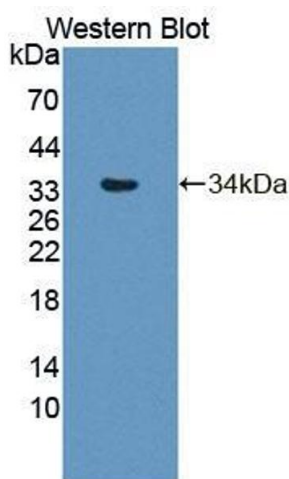
## Application Details

Application Notes:	<ul style="list-style-type: none"><li>Western blotting: 1:50-400 Immunocytochemistry in formalin fixed cells: 1:50-500 Immunohistochemistry in formalin fixed frozen section: 1:50-500 Immunohistochemistry in paraffin section: 1:10-100 Enzyme-linked Immunosorbent Assay: 1:100-1:5000 Optimal working dilutions must be determined by end user.</li></ul>
Comment:	The thermal stability is described by the loss rate. The loss rate was determined by accelerated thermal degradation test, that is, incubate the protein at 37&degC for 48h, and no obvious degradation and precipitation were observed. The loss rate is less than 5% within the expiration date under appropriate storage condition.
Restrictions:	For Research Use only

## Handling

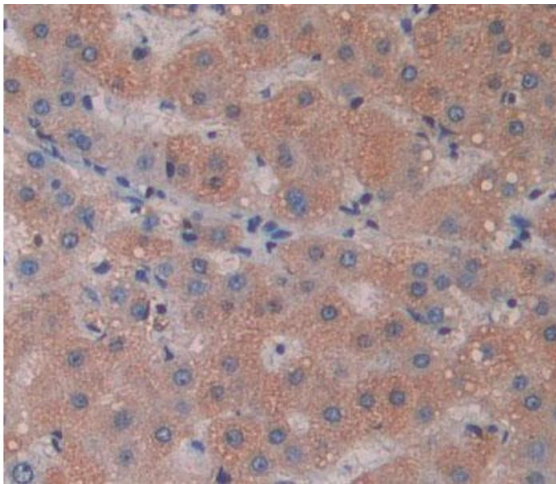
Format:	Liquid
Concentration:	Lot specific
Buffer:	PBS, pH 7.4, containing 0.02 % Sodium azide, 50 % glycerol.

## Images



### Western Blotting

**Image 1.** Figure. Western Blot; Sample: Recombinant protein.



#### Immunohistochemistry

**Image 2.** Used in DAB staining on formalin fixed paraffin-embedded liver tissue