

Datasheet for ABIN5014139  
**anti-PTBP1 antibody (AA 1-531)**

## 3 Images

[Go to Product page](#)

## Overview

Quantity:	100 µL
Target:	PTBP1
Binding Specificity:	AA 1-531
Reactivity:	Human
Host:	Rabbit
Clonality:	Polyclonal
Conjugate:	This PTBP1 antibody is un-conjugated
Application:	Western Blotting (WB), Immunohistochemistry (IHC), Immunocytochemistry (ICC)

## Product Details

Immunogen:	PTBP1 (Met1-Ile531)
Isotype:	IgG
Specificity:	The antibody is a rabbit polyclonal antibody raised against PTBP1. It has been selected for its ability to recognize PTBP1 in immunohistochemical staining and western blotting.
Purification:	Antigen-specific affinity chromatography

## Target Details

Target:	PTBP1
Abstract:	<a href="#">PTBP1 Products</a>
Background:	Alternative Names: HNRNPI, HNRPI, PTB, PTB-T, PTB2, PTB3, PTB4, pPTB, Heterogeneous

## Target Details

Nuclear Ribonucleoprotein I, 57 kDa RNA-binding protein PPTB-1

Pathways: [Regulation of Muscle Cell Differentiation](#)

## Application Details

Application Notes: 

- Western blotting: 1:50-400 Immunocytochemistry in formalin fixed cells: 1:50-500 Immunohistochemistry in formalin fixed frozen section: 1:50-500 Immunohistochemistry in paraffin section: 1:10-100 Enzyme-linked Immunosorbent Assay: 1:100-1:5000 Optimal working dilutions must be determined by end user.

Comment: The thermal stability is described by the loss rate. The loss rate was determined by accelerated thermal degradation test, that is, incubate the protein at 37°C for 48h, and no obvious degradation and precipitation were observed. The loss rate is less than 5% within the expiration date under appropriate storage condition.

Restrictions: For Research Use only

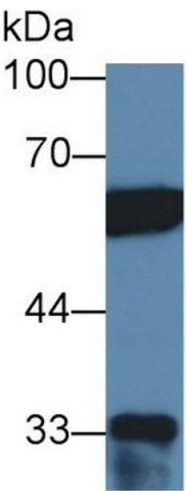
## Handling

Format: Liquid

Concentration: Lot specific

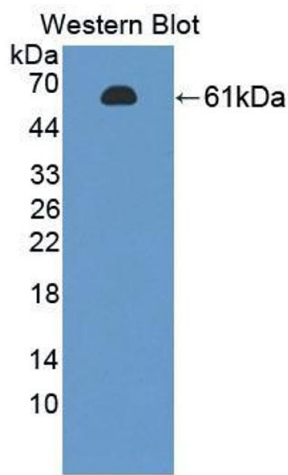
Buffer: PBS, pH 7.4, containing 0.02 % Sodium azide, 50 % glycerol.

## Images



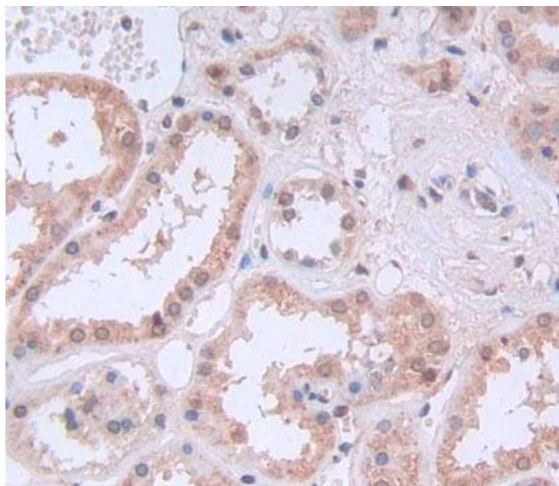
### Western Blotting

**Image 1.** Western Blot; Sample: Human Hela cell lysate; Primary Ab: 2µg/ml Rabbit Anti-Human PTBP1 Antibody Second Ab: 0.2µg/mL HRP-Linked Caprine Anti-Rabbit IgG Polyclonal Antibody (Catalog: SAA544Rb19)



Western Blotting

**Image 2.** Figure. Western Blot; Sample: Recombinant protein.



Immunohistochemistry

**Image 3.** Used in DAB staining on formalin fixed paraffin-embedded Kidney tissue