

Datasheet for ABIN5014140  
**anti-KCNJ10 antibody (AA 165-379)**



[Go to Product page](#)

2 Images

## Overview

Quantity:	100 µL
Target:	KCNJ10
Binding Specificity:	AA 165-379
Reactivity:	Human
Host:	Rabbit
Clonality:	Polyclonal
Conjugate:	This KCNJ10 antibody is un-conjugated
Application:	Western Blotting (WB), Immunohistochemistry (IHC), Immunocytochemistry (ICC)

## Product Details

Immunogen:	KCNJ10 (Phe165-Val379)
Isotype:	IgG
Specificity:	The antibody is a rabbit polyclonal antibody raised against KCNJ10. It has been selected for its ability to recognize KCNJ10 in immunohistochemical staining and western blotting.
Purification:	Antigen-specific affinity chromatography

## Target Details

Target:	KCNJ10
Alternative Name:	Potassium Inwardly Rectifying Channel Subfamily J, Member 10 (KCNJ10) ( <a href="#">KCNJ10 Products</a> )
Background:	Alternative Names: Kir4.1, Kir1.2, ATP-sensitive inward rectifier potassium channel 10, ATP-

Target Details

	dependent inwardly rectifying potassium channel Kir4.1, Inward rectifier K(+) channel Kir1.2
Pathways:	Dicarboxylic Acid Transport, Regulation of long-term Neuronal Synaptic Plasticity

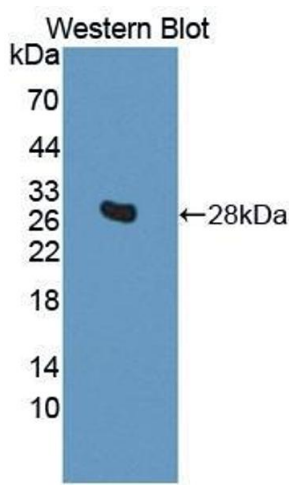
Application Details

Application Notes:	<ul style="list-style-type: none"><li>Western blotting: 1:50-400 Immunocytochemistry in formalin fixed cells: 1:50-500 Immunohistochemistry in formalin fixed frozen section: 1:50-500 Immunohistochemistry in paraffin section: 1:10-100 Enzyme-linked Immunosorbent Assay: 1:100-1:5000 Optimal working dilutions must be determined by end user.</li></ul>
Comment:	The thermal stability is described by the loss rate. The loss rate was determined by accelerated thermal degradation test, that is, incubate the protein at 37&degC for 48h, and no obvious degradation and precipitation were observed. The loss rate is less than 5% within the expiration date under appropriate storage condition.
Restrictions:	For Research Use only

Handling

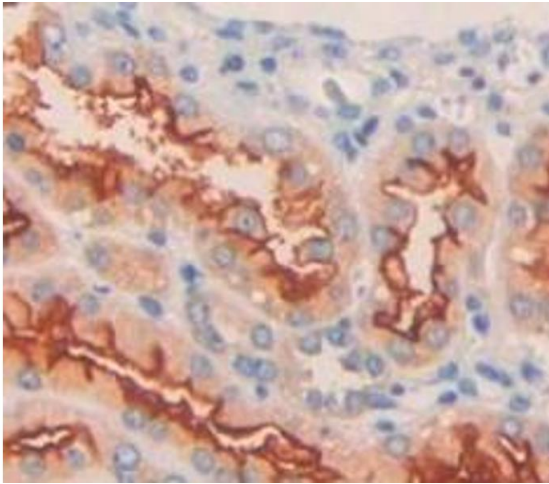
Format:	Liquid
Concentration:	Lot specific
Buffer:	PBS, pH 7.4, containing 0.02 % Sodium azide, 50 % glycerol.

Images



**Western Blotting**

**Image 1.** Figure. Western Blot; Sample: Recombinant protein.



#### Immunohistochemistry

**Image 2.** Used in DAB staining on formalin fixed paraffin-embedded Kidney tissue