



## Datasheet for ABIN5014181 **anti-PKIG antibody (AA 1-76)**



[Go to Product page](#)

### 3 Images

#### Overview

Quantity:	100 µL
Target:	PKIG
Binding Specificity:	AA 1-76
Reactivity:	Mouse
Host:	Rabbit
Clonality:	Polyclonal
Conjugate:	This PKIG antibody is un-conjugated
Application:	Western Blotting (WB), Immunohistochemistry (IHC), Immunocytochemistry (ICC)

#### Product Details

Immunogen:	PKIg (Met1-Ser76)
Isotype:	IgG
Specificity:	The antibody is a rabbit polyclonal antibody raised against PKIg. It has been selected for its ability to recognize PKIg in immunohistochemical staining and western blotting.
Purification:	Antigen-specific affinity chromatography

#### Target Details

Target:	PKIG
Alternative Name:	Protein Kinase Inhibitor Gamma (PKIg) ( <a href="#">PKIG Products</a> )
Background:	Alternative Names: PKI-G, CAMP-Dependent Protein Kinase Inhibitor Gamma

## Target Details

---

Pathways: [Myometrial Relaxation and Contraction](#)

## Application Details

---

Application Notes:	<ul style="list-style-type: none"><li>Western blotting: 1:50-400 Immunocytochemistry in formalin fixed cells: 1:50-500 Immunohistochemistry in formalin fixed frozen section: 1:50-500 Immunohistochemistry in paraffin section: 1:10-100 Enzyme-linked Immunosorbent Assay: 1:100-1:5000 Optimal working dilutions must be determined by end user.</li></ul>
Comment:	The thermal stability is described by the loss rate. The loss rate was determined by accelerated thermal degradation test, that is, incubate the protein at 37°C for 48h, and no obvious degradation and precipitation were observed. The loss rate is less than 5% within the expiration date under appropriate storage condition.
Restrictions:	For Research Use only

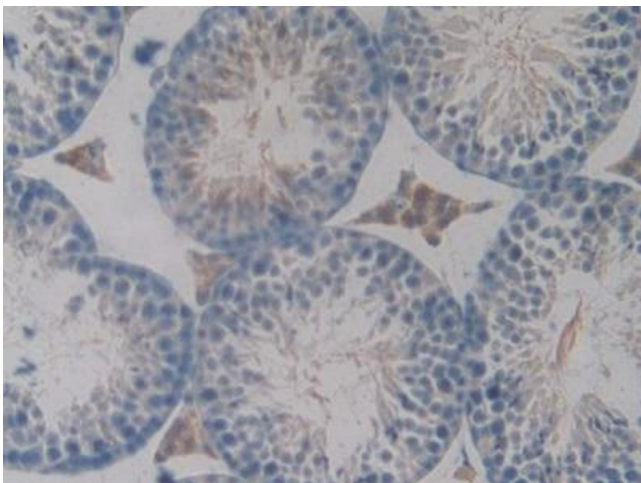
## Handling

---

Format:	Liquid
Concentration:	Lot specific
Buffer:	PBS, pH 7.4, containing 0.02 % Sodium azide, 50 % glycerol.

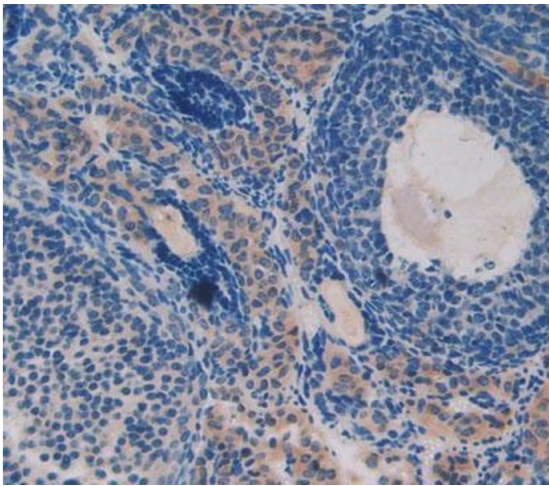
## Images

---



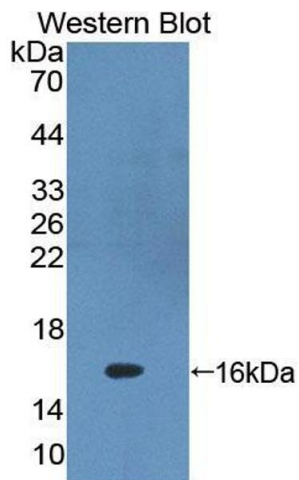
### Immunohistochemistry

**Image 1.** DAB staining on IHC-P; Samples: Mouse Testis Tissue



### Immunohistochemistry

**Image 2.** Used in DAB staining on formalin fixed paraffin-embedded ovary tissue



### Western Blotting

**Image 3.** Figure. Western Blot; Sample: Recombinant protein.