

Datasheet for ABIN5014190

**anti-GADD34 antibody (Regulatory Subunit 15A)**[Go to Product page](#)**2** Images

## Overview

Quantity:	100 µL
Target:	GADD34 (PPP1R15A)
Binding Specificity:	AA 433-636, Regulatory Subunit 15A
Reactivity:	Mouse
Host:	Rabbit
Clonality:	Polyclonal
Conjugate:	This GADD34 antibody is un-conjugated
Application:	Western Blotting (WB), Immunohistochemistry (IHC), Immunocytochemistry (ICC)

## Product Details

Immunogen:	PPP1R15A (Pro433-Thr636)
Isotype:	IgG
Specificity:	The antibody is a rabbit polyclonal antibody raised against PPP1R15A. It has been selected for its ability to recognize PPP1R15A in immunohistochemical staining and western blotting.
Purification:	Antigen-specific affinity chromatography

## Target Details

Target:	GADD34 (PPP1R15A)
Alternative Name:	Protein Phosphatase 1, (PPP1R15A) ( <a href="#">PPP1R15A Products</a> )
Background:	Alternative Names: PPP1-R15A, PPP1R15-A, PPP1-R15-A, GADD34, Growth Arrest And DNA-

## Target Details

Damage-Inducible 34, Myeloid differentiation primary response protein MyD116 homolog

Pathways: [ER-Nucleus Signaling](#), [Unfolded Protein Response](#)

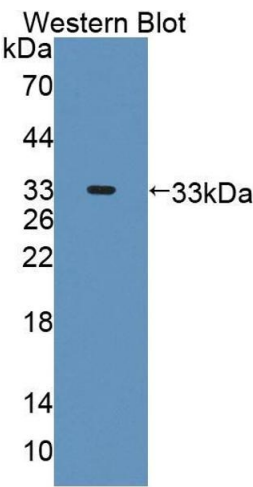
## Application Details

Application Notes:	<ul style="list-style-type: none"><li>Western blotting: 1:50-400 Immunocytochemistry in formalin fixed cells: 1:50-500 Immunohistochemistry in formalin fixed frozen section: 1:50-500 Immunohistochemistry in paraffin section: 1:10-100 Enzyme-linked Immunosorbent Assay: 1:100-1:5000 Optimal working dilutions must be determined by end user.</li></ul>
Comment:	The thermal stability is described by the loss rate. The loss rate was determined by accelerated thermal degradation test, that is, incubate the protein at 37&degC for 48h, and no obvious degradation and precipitation were observed. The loss rate is less than 5% within the expiration date under appropriate storage condition.
Restrictions:	For Research Use only

## Handling

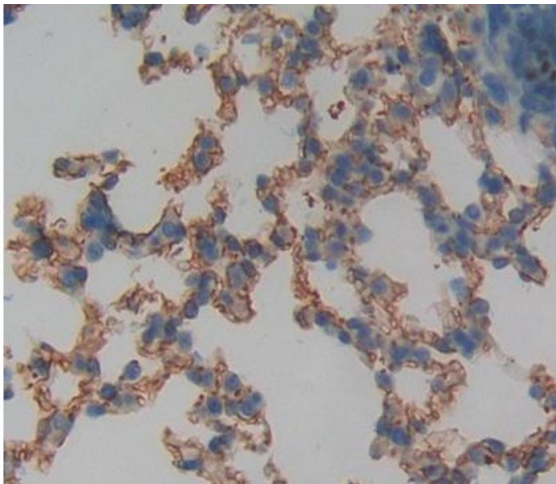
Format:	Liquid
Concentration:	Lot specific
Buffer:	PBS, pH 7.4, containing 0.02 % Sodium azide, 50 % glycerol.

## Images



### Western Blotting

**Image 1.** Figure. Western Blot; Sample: Recombinant protein.



#### Immunohistochemistry

**Image 2.** Used in DAB staining on formalin fixed paraffin-embedded lung tissue