

Datasheet for ABIN5014222  
**anti-PTPN21 antibody (AA 981-1174)**[Go to Product page](#)

## 2 Images

## Overview

Quantity:	100 µL
Target:	PTPN21
Binding Specificity:	AA 981-1174
Reactivity:	Human
Host:	Rabbit
Clonality:	Polyclonal
Conjugate:	This PTPN21 antibody is un-conjugated
Application:	Western Blotting (WB), Immunohistochemistry (IHC), Immunocytochemistry (ICC)

## Product Details

Immunogen:	PTPN21 (Phe981-Ile1174)
Isotype:	IgG
Specificity:	The antibody is a rabbit polyclonal antibody raised against PTPN21. It has been selected for its ability to recognize PTPN21 in immunohistochemical staining and western blotting.
Purification:	Antigen-specific affinity chromatography

## Target Details

Target:	PTPN21
Alternative Name:	Protein Tyrosine Phosphatase, Non Receptor Type 21 (PTPN21) ( <a href="#">PTPN21 Products</a> )
Background:	Alternative Names: PTPD1, PTPRL10, Protein-tyrosine phosphatase D1

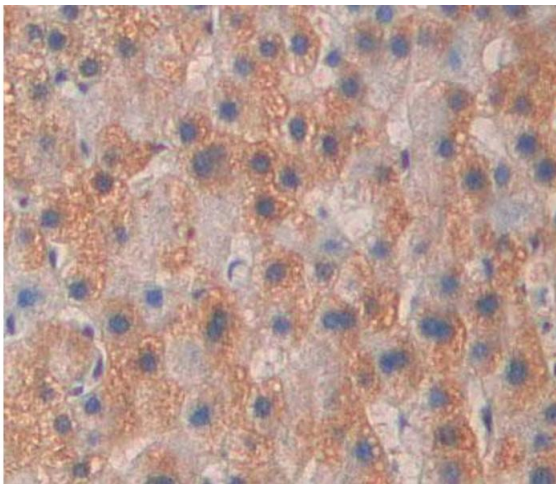
## Application Details

Application Notes:	<ul style="list-style-type: none"><li>Western blotting: 1:50-400 Immunocytochemistry in formalin fixed cells: 1:50-500 Immunohistochemistry in formalin fixed frozen section: 1:50-500 Immunohistochemistry in paraffin section: 1:10-100 Enzyme-linked Immunosorbent Assay: 1:100-1:5000 Optimal working dilutions must be determined by end user.</li></ul>
Comment:	The thermal stability is described by the loss rate. The loss rate was determined by accelerated thermal degradation test, that is, incubate the protein at 37°C for 48h, and no obvious degradation and precipitation were observed. The loss rate is less than 5% within the expiration date under appropriate storage condition.
Restrictions:	For Research Use only

## Handling

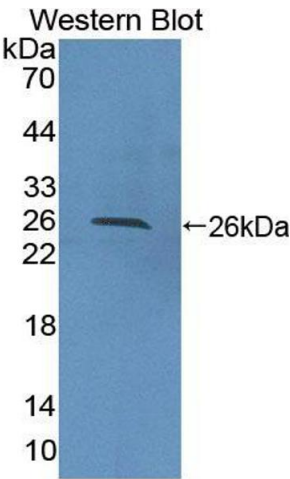
Format:	Liquid
Concentration:	Lot specific
Buffer:	PBS, pH 7.4, containing 0.02 % Sodium azide, 50 % glycerol.

## Images



### Immunohistochemistry

**Image 1.** Used in DAB staining on formalin fixed paraffin-embedded liver tissue



Western Blotting

**Image 2.** Figure. Western Blot; Sample: Recombinant protein.