

Datasheet for ABIN5014244
anti-PDP2 antibody (AA 1-186)



[Go to Product page](#)

2 Images

Overview

Quantity:	100 µL
Target:	PDP2
Binding Specificity:	AA 1-186
Reactivity:	Human
Host:	Rabbit
Clonality:	Polyclonal
Conjugate:	This PDP2 antibody is un-conjugated
Application:	Western Blotting (WB), Immunohistochemistry (IHC), Immunocytochemistry (ICC), Immunoprecipitation (IP)

Product Details

Purpose:	Polyclonal Antibody to Pyruvate Dehydrogenase Phosphatase 2 (PDP2)
Immunogen:	RPD743Hu01Recombinant Pyruvate Dehydrogenase Phosphatase 2 (PDP2)
Isotype:	IgG
Specificity:	The antibody is a rabbit polyclonal antibody raised against PDP2. It has been selected for its ability to recognize PDP2 in immunohistochemical staining and western blotting.
Cross-Reactivity:	Pig
Purification:	Antigen-specific affinity chromatography followed by Protein A affinity chromatography

Target Details

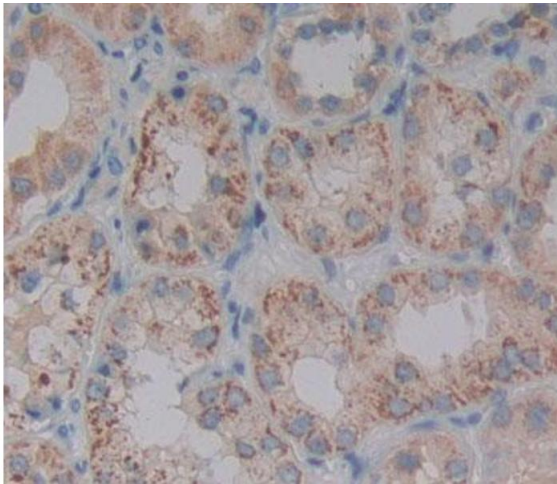
Target:	PDP2
Alternative Name:	PDP2 (PDP2 Products)
Background:	PPM2C2, PDPC 2, Protein Phosphatase 2C,Magnesium-Dependent,Catalytic Subunit 2, [Pyruvate dehydrogenase [acetyl-transferring]]-phosphatase 2, mitochondrial

Application Details

Application Notes:	Western blotting: 0.01-2 µg/mL,Immunohistochemistry: 5-20 µg/mL,Immunocytochemistry: 5-20 µg/mL,Optimal working dilutions must be determined by end user.
Comment:	The thermal stability is described by the loss rate. The loss rate was determined by accelerated thermal degradation test, that is, incubate the protein at 37°C for 48h, and no obvious degradation and precipitation were observed. The loss rate is less than 5% within the expiration date under appropriate storage condition.
Restrictions:	For Research Use only

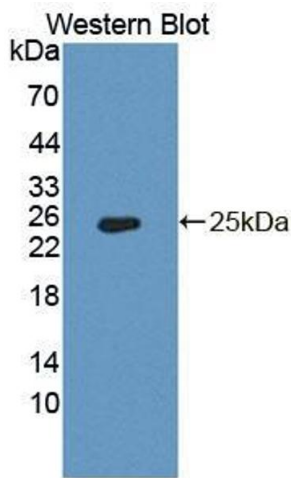
Handling

Format:	Liquid
Concentration:	0.5 mg/mL
Buffer:	PBS, pH 7.4, containing 0.02 % Sodium azide, 50 % glycerol.
Preservative:	Sodium azide
Storage:	4 °C,-20 °C
Storage Comment:	Store at 4°C for frequent use. Stored at -20°C in a manual defrost freezer for two year without detectable loss of activity. Avoid repeated freeze-thaw cycles.



Immunohistochemistry

Image 1. Used in DAB staining on formalin fixed paraffin-embedded kidney tissue



Western Blotting

Image 2. Figure. Western Blot; Sample: Recombinant protein.