



[Go to Product page](#)

Datasheet for ABIN5014246

## anti-GRF2 antibody (AA 780-1035)

### 3 Images

#### Overview

Quantity:	100 µL
Target:	GRF2 (RAPGEF1)
Binding Specificity:	AA 780-1035
Reactivity:	Human
Host:	Rabbit
Clonality:	Polyclonal
Application:	Western Blotting (WB), Immunohistochemistry (IHC), Immunocytochemistry (ICC)

#### Product Details

Immunogen:	RAPGEF1 (Lys780-Asn1035)
Isotype:	IgG
Specificity:	The antibody is a rabbit polyclonal antibody raised against RAPGEF1. It has been selected for its ability to recognize RAPGEF1 in immunohistochemical staining and western blotting.
Purification:	Antigen-specific affinity chromatography

#### Target Details

Target:	GRF2 (RAPGEF1)
Alternative Name:	Rap Guanine Nucleotide Exchange Factor 1 (RAPGEF1) ( <a href="#">RAPGEF1 Products</a> )
Background:	Alternative Names: C3G, GRF2, RAP-GEF1, Guanine Nucleotide-Releasing Factor 2(Specific For Crk Proto-Oncogene), CRK SH3-binding GNRP

## Target Details

Pathways: [Interferon-gamma Pathway](#), [Neurotrophin Signaling Pathway](#), [Platelet-derived growth Factor Receptor Signaling](#), [Signaling of Hepatocyte Growth Factor Receptor](#)

## Application Details

Application Notes: 

- Western blotting: 1:50-400 Immunocytochemistry in formalin fixed cells: 1:50-500 Immunohistochemistry in formalin fixed frozen section: 1:50-500 Immunohistochemistry in paraffin section: 1:10-100 Enzyme-linked Immunosorbent Assay: 1:100-1:5000 Optimal working dilutions must be determined by end user.

Comment: The thermal stability is described by the loss rate. The loss rate was determined by accelerated thermal degradation test, that is, incubate the protein at 37°C for 48h, and no obvious degradation and precipitation were observed. The loss rate is less than 5% within the expiration date under appropriate storage condition.

Restrictions: For Research Use only

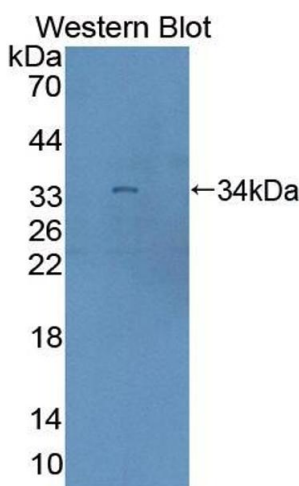
## Handling

Format: Liquid

Concentration: Lot specific

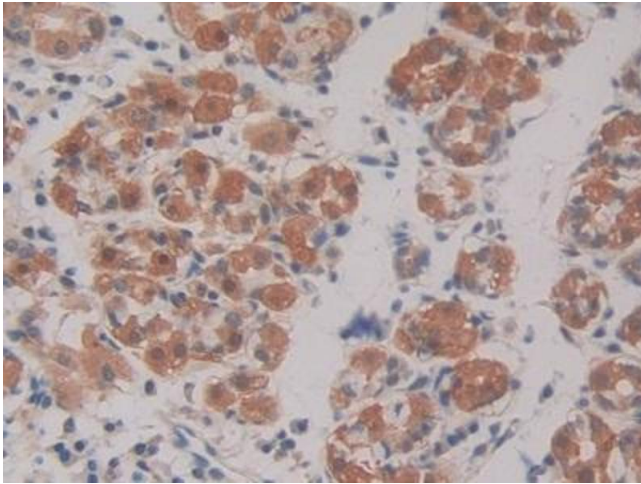
Buffer: PBS, pH 7.4, containing 0.02 % Sodium azide, 50 % glycerol.

## Images



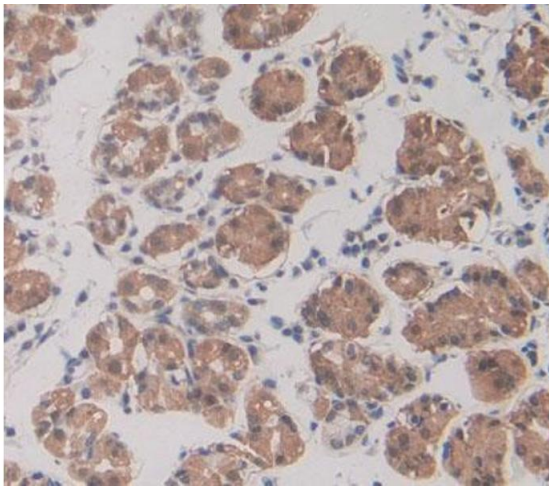
### Western Blotting

**Image 1.** Figure. Western Blot; Sample: Recombinant protein.



#### Immunohistochemistry

**Image 2.** DAB staining on IHC-P; Samples: Human Stomach Tissue



#### Immunohistochemistry

**Image 3.** Used in DAB staining on formalin fixed paraffin-embedded stomach tissue