



[Go to Product page](#)

Datasheet for ABIN5014261
anti-RGS10 antibody (AA 16-181)

2 Images

Overview

Quantity:	100 µL
Target:	RGS10
Binding Specificity:	AA 16-181
Reactivity:	Mouse
Host:	Rabbit
Clonality:	Polyclonal
Conjugate:	This RGS10 antibody is un-conjugated
Application:	Western Blotting (WB), Immunohistochemistry (IHC), Immunocytochemistry (ICC)

Product Details

Immunogen:	RGS10 (Ser16-Thr181)
Isotype:	IgG
Specificity:	The antibody is a rabbit polyclonal antibody raised against RGS10. It has been selected for its ability to recognize RGS10 in immunohistochemical staining and western blotting.
Purification:	Antigen-specific affinity chromatography

Target Details

Target:	RGS10
Alternative Name:	Regulator Of G Protein Signaling 10 (RGS10) (RGS10 Products)
Pathways:	Myometrial Relaxation and Contraction, Regulation of G-Protein Coupled Receptor Protein

Target Details

Signaling

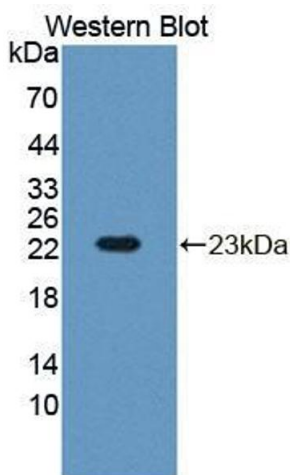
Application Details

Application Notes:	<ul style="list-style-type: none">Western blotting: 1:50-400 Immunocytochemistry in formalin fixed cells: 1:50-500 Immunohistochemistry in formalin fixed frozen section: 1:50-500 Immunohistochemistry in paraffin section: 1:10-100 Enzyme-linked Immunosorbent Assay: 1:100-1:5000 Optimal working dilutions must be determined by end user.
Comment:	The thermal stability is described by the loss rate. The loss rate was determined by accelerated thermal degradation test, that is, incubate the protein at 37°C for 48h, and no obvious degradation and precipitation were observed. The loss rate is less than 5% within the expiration date under appropriate storage condition.
Restrictions:	For Research Use only

Handling

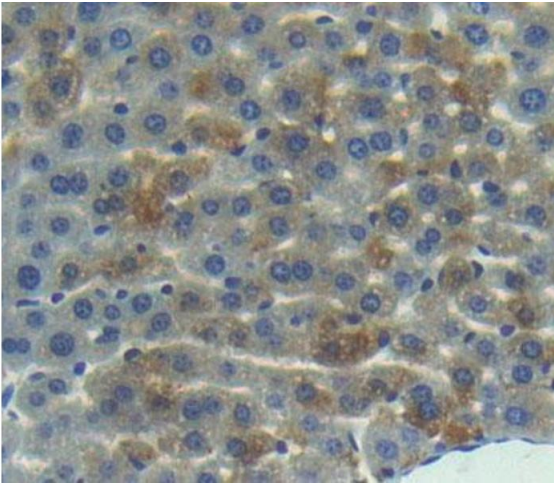
Format:	Liquid
Concentration:	Lot specific
Buffer:	PBS, pH 7.4, containing 0.02 % Sodium azide, 50 % glycerol.

Images



Western Blotting

Image 1. Figure. Western Blot; Sample: Recombinant protein.



Immunohistochemistry

Image 2. Used in DAB staining on formalin fixed paraffin-embedded liver tissue