



[Go to Product page](#)

Datasheet for ABIN5014266

## anti-RYK antibody (AA 308-570)

### 3 Images

#### Overview

Quantity:	100 µL
Target:	RYK
Binding Specificity:	AA 308-570
Reactivity:	Human
Host:	Rabbit
Clonality:	Polyclonal
Conjugate:	This RYK antibody is un-conjugated
Application:	Western Blotting (WB), Immunohistochemistry (IHC), Immunocytochemistry (ICC)

#### Product Details

Immunogen:	RYK (Lys308-Cys570)
Isotype:	IgG
Specificity:	The antibody is a rabbit polyclonal antibody raised against RYK. It has been selected for its ability to recognize RYK in immunohistochemical staining and western blotting.
Purification:	Antigen-specific affinity chromatography

#### Target Details

Target:	RYK
Alternative Name:	Related To Receptor Tyrosine Kinase (RYK) ( <a href="#">RYK Products</a> )
Background:	Alternative Names: JTK5, JTK5A, RYK1, JTK5A Protein Tyrosine Kinase

## Target Details

---

Pathways: [RTK Signaling](#), [WNT Signaling](#), [Regulation of Cell Size](#)

## Application Details

---

Application Notes: 

- Western blotting: 1:50-400 Immunocytochemistry in formalin fixed cells: 1:50-500 Immunohistochemistry in formalin fixed frozen section: 1:50-500 Immunohistochemistry in paraffin section: 1:10-100 Enzyme-linked Immunosorbent Assay: 1:100-1:5000 Optimal working dilutions must be determined by end user.

Comment: The thermal stability is described by the loss rate. The loss rate was determined by accelerated thermal degradation test, that is, incubate the protein at 37°C for 48h, and no obvious degradation and precipitation were observed. The loss rate is less than 5% within the expiration date under appropriate storage condition.

Restrictions: For Research Use only

## Handling

---

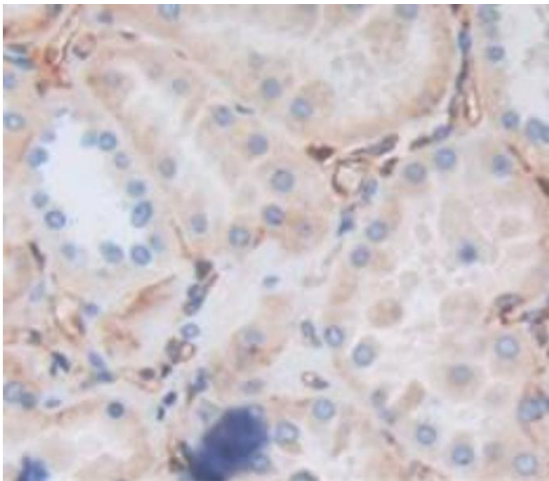
Format: Liquid

Concentration: Lot specific

Buffer: PBS, pH 7.4, containing 0.02 % Sodium azide, 50 % glycerol.

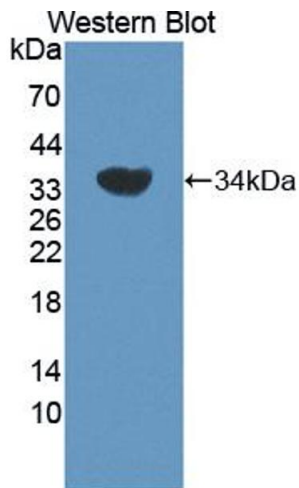
## Images

---



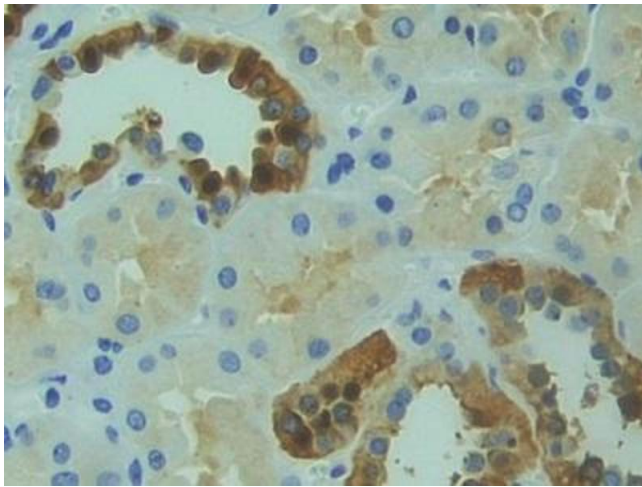
### Immunohistochemistry

**Image 1.** Used in DAB staining on formalin fixed paraffin-embedded Kidney tissue



### Western Blotting

**Image 2.** Figure. Western Blot; Sample: Recombinant protein.



### Immunohistochemistry

**Image 3.** DAB staining on IHC-P; Samples: Human Kidney Tissue