



[Go to Product page](#)

Datasheet for ABIN5014271  
**anti-RLBP1 antibody (AA 1-317)**

2 Images

### Overview

Quantity:	100 µL
Target:	RLBP1
Binding Specificity:	AA 1-317
Reactivity:	Human
Host:	Rabbit
Clonality:	Polyclonal
Application:	Western Blotting (WB), Immunohistochemistry (IHC), Immunocytochemistry (ICC), Immunoprecipitation (IP)

### Product Details

Purpose:	Polyclonal Antibody to Retinaldehyde Binding Protein 1 (RLBP1)
Immunogen:	Recombinant Retinaldehyde Binding Protein 1 (RLBP1) corresponding to Met1~ Phe317
Isotype:	IgG
Specificity:	The antibody is a rabbit polyclonal antibody raised against RLBP1. It has been selected for its ability to recognize RLBP1 in immunohistochemical staining and western blotting.
Cross-Reactivity:	Mouse, Pig, Rat
Purification:	Antigen-specific affinity chromatography followed by Protein A affinity chromatography

### Target Details

Target:	RLBP1
---------	-------

## Target Details

---

Alternative Name: Retinaldehyde Binding Protein 1 ([RLBP1 Products](#))

---

Background: CRALBP, Cellular retinaldehyde-binding protein

---

## Application Details

---

Application Notes: Western blotting: 0.5-5 µg/mL Immunohistochemistry: 5-20 µg/mL Immunocytochemistry: 5-20 µg/mL Optimal working dilutions must be determined by end user.

---

Comment: The thermal stability is described by the loss rate. The loss rate was determined by accelerated thermal degradation test, that is, incubate the protein at 37°C for 48h, and no obvious degradation and precipitation were observed. The loss rate is less than 5% within the expiration date under appropriate storage condition.

---

Restrictions: For Research Use only

---

## Handling

---

Format: Liquid

---

Concentration: Lot specific

---

Buffer: 0.01M PBS, pH 7.4, containing 0.05 % Proclin-300, 50 % glycerol.

---

Preservative: ProClin

---

Storage: 4 °C,-20 °C

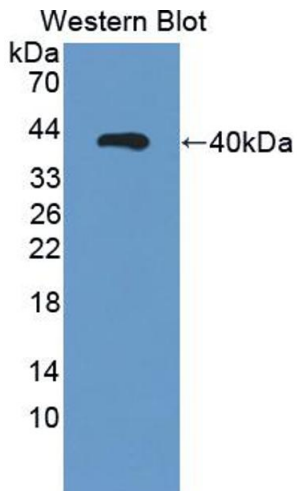
---

Storage Comment: Store at 4°C for frequent use. Stored at -20°C in a manual defrost freezer for two year without detectable loss of activity. Avoid repeated freeze-thaw cycles.

---

Expiry Date: 24 months

---



#### Western Blotting

**Image 1.** Figure. Western Blot; Sample: Recombinant protein.



#### Western Blotting

**Image 2.** Western Blot; Sample: Porcine Eye lysate; Primary Ab: 3µg/ml Rabbit Anti-Human RLBP1 Antibody Second Ab: 0.2µg/mL HRP-Linked Caprine Anti-Rabbit IgG Polyclonal Antibody (Catalog: SAA544Rb19)