

Datasheet for ABIN5014280
anti-RNASEH2A antibody (AA 1-301)[Go to Product page](#)

3 Images

Overview

Quantity:	100 µL
Target:	RNASEH2A
Binding Specificity:	AA 1-301
Reactivity:	Rat
Host:	Rabbit
Clonality:	Polyclonal
Conjugate:	This RNASEH2A antibody is un-conjugated
Application:	Western Blotting (WB), Immunohistochemistry (IHC), Immunocytochemistry (ICC)

Product Details

Immunogen:	RNASEH2A (Met1-Leu301)
Isotype:	IgG
Specificity:	The antibody is a rabbit polyclonal antibody raised against RNASEH2A. It has been selected for its ability to recognize RNASEH2A in immunohistochemical staining and western blotting.
Purification:	Antigen-specific affinity chromatography

Target Details

Target:	RNASEH2A
Alternative Name:	Ribonuclease H2 Subunit A (RNASEH2A) (RNASEH2A Products)
Background:	Alternative Names: Rnase-H2A, RNASEHI, RNHIA, RNHL, AGS4, Ribonuclease H2, Large Subunit,

Target Details

Aicardi-Goutieres Syndrome 4, Ribonuclease HI large subunit

Application Details

Application Notes:

- Western blotting: 1:50-400 Immunocytochemistry in formalin fixed cells: 1:50-500 Immunohistochemistry in formalin fixed frozen section: 1:50-500 Immunohistochemistry in paraffin section: 1:10-100 Enzyme-linked Immunosorbent Assay: 1:100-1:5000 Optimal working dilutions must be determined by end user.

Comment:

The thermal stability is described by the loss rate. The loss rate was determined by accelerated thermal degradation test, that is, incubate the protein at 37°C for 48h, and no obvious degradation and precipitation were observed. The loss rate is less than 5% within the expiration date under appropriate storage condition.

Restrictions:

For Research Use only

Handling

Format:

Liquid

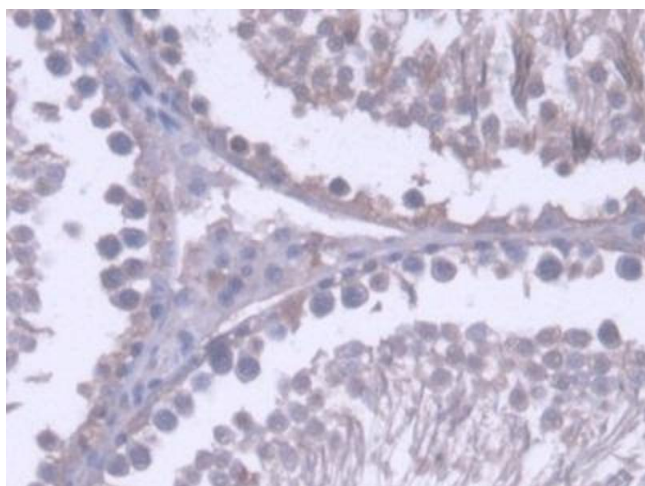
Concentration:

Lot specific

Buffer:

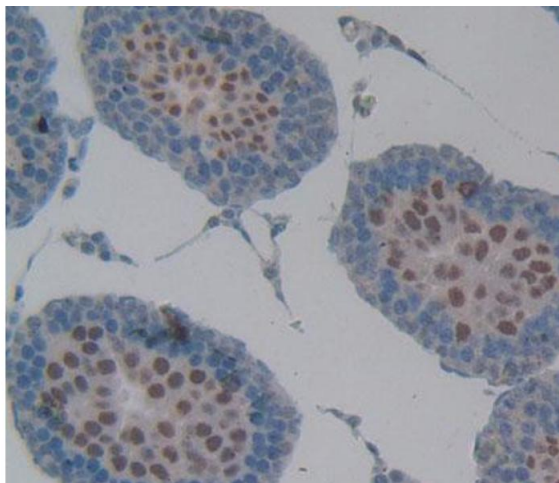
PBS, pH 7.4, containing 0.02 % Sodium azide, 50 % glycerol.

Images



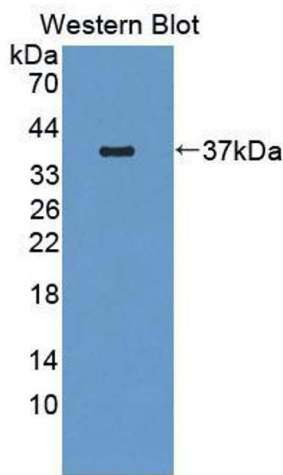
Immunohistochemistry

Image 1. DAB staining on IHC-P; Samples: Rat Testis Tissue



Immunohistochemistry

Image 2. Used in DAB staining on formalin fixed paraffin-embedded testis tissue



Western Blotting

Image 3. Figure. Western Blot; Sample: Recombinant protein.