

Datasheet for ABIN5014282
anti-CBL antibody (AA 558-816)



[Go to Product page](#)

3 Images

Overview

Quantity:	100 µL
Target:	CBL
Binding Specificity:	AA 558-816
Reactivity:	Human
Host:	Rabbit
Clonality:	Polyclonal
Conjugate:	This CBL antibody is un-conjugated
Application:	Western Blotting (WB), Immunohistochemistry (IHC), Immunocytochemistry (ICC)

Product Details

Immunogen:	RNF55 (Ser558-Gly816)
Isotype:	IgG
Specificity:	The antibody is a rabbit polyclonal antibody raised against RNF55. It has been selected for its ability to recognize RNF55 in immunohistochemical staining and western blotting.
Purification:	Antigen-specific affinity chromatography

Target Details

Target:	CBL
Alternative Name:	Ring Finger Protein 55 (RNF55) (CBL Products)
Background:	Alternative Names: CBL, C-CBL, CBL2, Cas-Br-M(Murine)Ecotropic Retroviral Transforming

Target Details

Sequence, Casitas B-lineage Lymphoma, Proto-oncogene c-Cbl, Signal transduction protein CBL

Pathways: [TCR Signaling](#), [Interferon-gamma Pathway](#), [EGFR Signaling Pathway](#), [EGFR Downregulation](#), [VEGFR1 Specific Signals](#)

Application Details

Application Notes:

- Western blotting: 1:50-400 Immunocytochemistry in formalin fixed cells: 1:50-500 Immunohistochemistry in formalin fixed frozen section: 1:50-500 Immunohistochemistry in paraffin section: 1:10-100 Enzyme-linked Immunosorbent Assay: 1:100-1:5000 Optimal working dilutions must be determined by end user.

Comment: The thermal stability is described by the loss rate. The loss rate was determined by accelerated thermal degradation test, that is, incubate the protein at 37°C for 48h, and no obvious degradation and precipitation were observed. The loss rate is less than 5% within the expiration date under appropriate storage condition.

Restrictions: For Research Use only

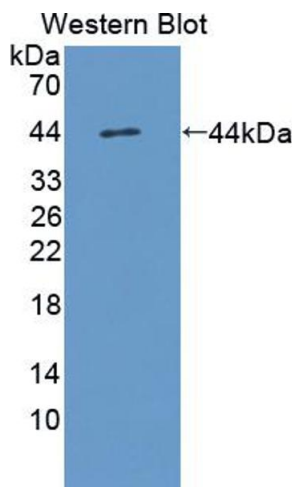
Handling

Format: Liquid

Concentration: Lot specific

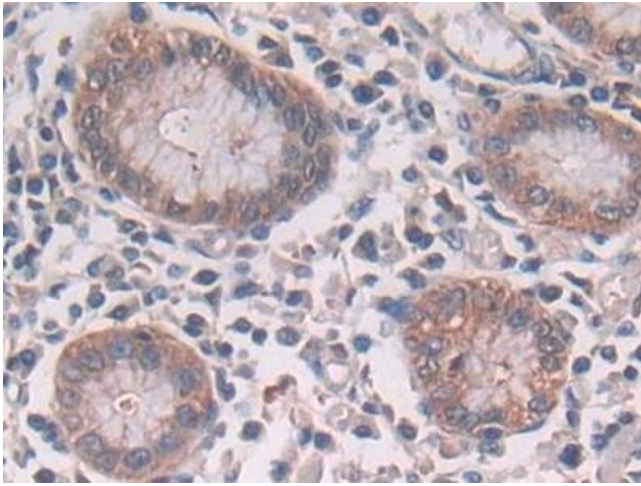
Buffer: PBS, pH 7.4, containing 0.02 % Sodium azide, 50 % glycerol.

Images



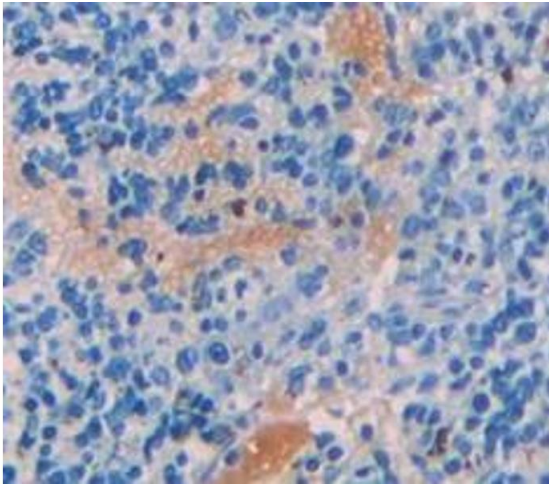
Western Blotting

Image 1. Figure. Western Blot; Sample: Recombinant protein.



Immunohistochemistry

Image 2. DAB staining on IHC-P; Samples: Human Stomach Tissue



Immunohistochemistry

Image 3. Used in DAB staining on formalin fixed paraffin-embedded Kidney tissue