

Datasheet for ABIN5014305  
**anti-SGK2 antibody (AA 40-311)**

## 3 Images

[Go to Product page](#)

## Overview

|                      |  |
|----------------------|--|
| Quantity:            | 100 µL   |
| Target:              | SGK2   |
| Binding Specificity: | AA 40-311  |
| Reactivity:          | Human  |
| Host:                | Rabbit   |
| Clonality:           | Polyclonal   |
| Application:         | Western Blotting (WB), Immunohistochemistry (IHC), Immunocytochemistry (ICC) |

## Product Details

|               |  |
|---------------|--|
| Immunogen:    | SGK2 (Val40-Pro311)  |
| Isotype:      | IgG  |
| Specificity:  | The antibody is a rabbit polyclonal antibody raised against SGK2. It has been selected for its ability to recognize SGK2 in immunohistochemical staining and western blotting. |
| Purification: | Antigen-specific affinity chromatography   |

## Target Details

|             |   |
|-------------|---|
| Target:     | SGK2  |
| Abstract:   | <a href="#">SGK2 Products</a>                           |
| Background: | Alternative Names: Serine/threonine-protein kinase Sgk2 |

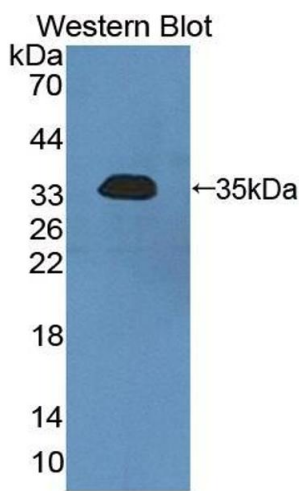
Application Details

|                    |   |
|--------------------|---|
| Application Notes: | <ul style="list-style-type: none"><li>Western blotting: 1:50-400 Immunocytochemistry in formalin fixed cells: 1:50-500 Immunohistochemistry in formalin fixed frozen section: 1:50-500 Immunohistochemistry in paraffin section: 1:10-100 Enzyme-linked Immunosorbent Assay: 1:100-1:5000 Optimal working dilutions must be determined by end user.</li></ul> |
| Comment:           | The thermal stability is described by the loss rate. The loss rate was determined by accelerated thermal degradation test, that is, incubate the protein at 37&degC for 48h, and no obvious degradation and precipitation were observed. The loss rate is less than 5% within the expiration date under appropriate storage condition.                        |
| Restrictions:      | For Research Use only   |

Handling

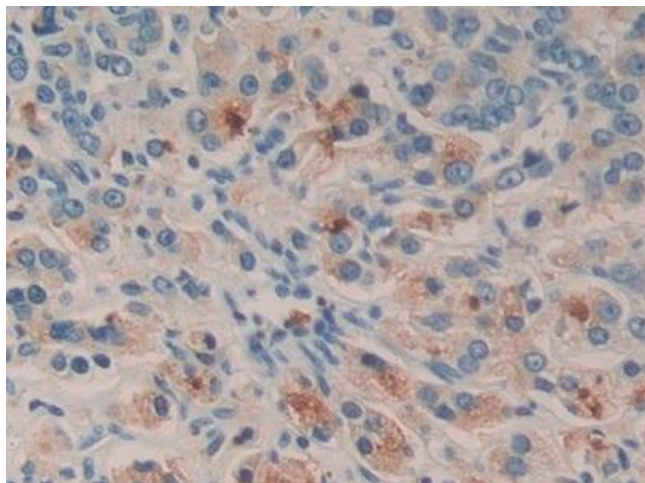
|                |   |
|----------------|---|
| Format:        | Liquid  |
| Concentration: | Lot specific  |
| Buffer:        | PBS, pH 7.4, containing 0.02 % Sodium azide, 50 % glycerol. |

Images



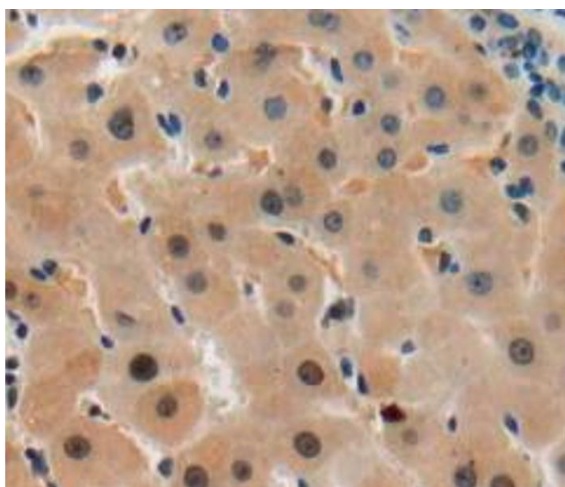
**Western Blotting**

**Image 1.** Figure. Western Blot; Sample: Recombinant protein.



#### Immunohistochemistry

**Image 2.** DAB staining on IHC-P; Samples: Human Prostate cancer Tissue



#### Immunohistochemistry

**Image 3.** Used in DAB staining on formalin fixed paraffin-embedded liver tissue