



[Go to Product page](#)

Datasheet for ABIN5014315  
**anti-SIRPA antibody (AA 116-308)**

3 Images

### Overview

Quantity:	100 µL
Target:	SIRPA
Binding Specificity:	AA 116-308
Reactivity:	Rat
Host:	Rabbit
Clonality:	Polyclonal
Conjugate:	This SIRPA antibody is un-conjugated
Application:	Western Blotting (WB), Immunohistochemistry (IHC), Immunocytochemistry (ICC)

### Product Details

Immunogen:	SIRPa (Asp116-Asp308)
Isotype:	IgG
Specificity:	The antibody is a rabbit polyclonal antibody raised against SIRPa. It has been selected for its ability to recognize SIRPa in immunohistochemical staining and western blotting.
Purification:	Antigen-specific affinity chromatography

### Target Details

Target:	SIRPA
Alternative Name:	Signal Regulatory Protein Alpha (SIRPa) ( <a href="#">SIRPA Products</a> )
Background:	Alternative Names: CD172a, SIRP-A, P84, BIT, MFR, MYD1, PTPNS1, SHPS1, SIRP, Tyrosine-

## Target Details

---

Protein Phosphatase Non-Receptor Type Substrate 1, Macrophage fusion receptor

## Application Details

---

Application Notes:	<ul style="list-style-type: none"><li>Western blotting: 1:50-400 Immunocytochemistry in formalin fixed cells: 1:50-500 Immunohistochemistry in formalin fixed frozen section: 1:50-500 Immunohistochemistry in paraffin section: 1:10-100 Enzyme-linked Immunosorbent Assay: 1:100-1:5000 Optimal working dilutions must be determined by end user.</li></ul>
Comment:	The thermal stability is described by the loss rate. The loss rate was determined by accelerated thermal degradation test, that is, incubate the protein at 37°C for 48h, and no obvious degradation and precipitation were observed. The loss rate is less than 5% within the expiration date under appropriate storage condition.
Restrictions:	For Research Use only

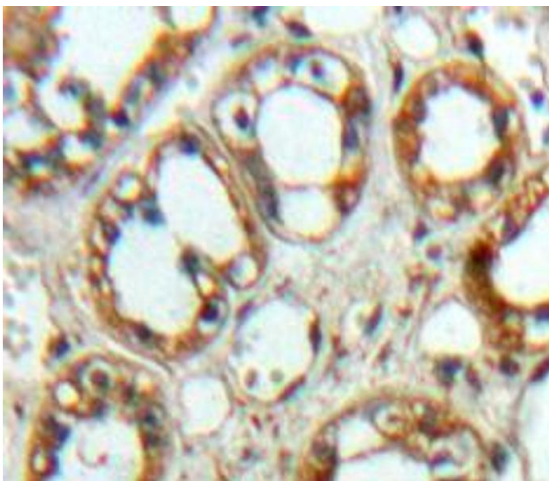
## Handling

---

Format:	Liquid
Concentration:	Lot specific
Buffer:	PBS, pH 7.4, containing 0.02 % Sodium azide, 50 % glycerol.

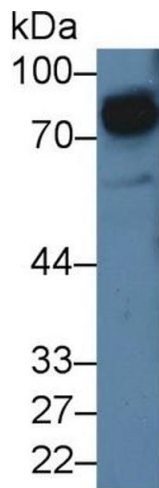
## Images

---



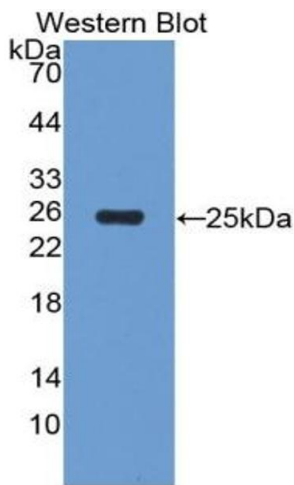
### Immunohistochemistry

**Image 1.** Used in DAB staining on formalin fixed paraffin-embedded Kidney tissue



#### Western Blotting

**Image 2.** Western Blot; Sample: Rat Cerebrum lysate; Primary Ab: 5µg/ml Rabbit Anti-Rat SIRPa Antibody Second Ab: 0.2µg/mL HRP-Linked Caprine Anti-Rabbit IgG Polyclonal Antibody (Catalog: SAA544Rb19)



#### Western Blotting

**Image 3.** Figure. Western Blot; Sample: Recombinant protein.