

Datasheet for ABIN5014317

anti-SSR1 antibody (AA 19-286)**3** Images[Go to Product page](#)

Overview

Quantity:	100 µL
Target:	SSR1
Binding Specificity:	AA 19-286
Reactivity:	Human
Host:	Rabbit
Clonality:	Polyclonal
Conjugate:	This SSR1 antibody is un-conjugated
Application:	Western Blotting (WB), Immunohistochemistry (IHC), Immunocytochemistry (ICC)

Product Details

Immunogen:	SSRa (Val19-Glu286)
Isotype:	IgG
Specificity:	The antibody is a rabbit polyclonal antibody raised against SSRa. It has been selected for its ability to recognize SSRa in immunohistochemical staining and western blotting.
Purification:	Antigen-specific affinity chromatography

Target Details

Target:	SSR1
Alternative Name:	Signal Sequence Receptor Alpha (SSRa) (SSR1 Products)
Background:	Alternative Names: SSR-A, SSR1, TRAPA, Translocon-Associated Protein Alpha

Target Details

Pathways: [ER-Nucleus Signaling](#)

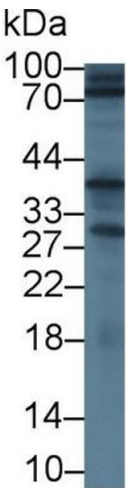
Application Details

Application Notes:	<ul style="list-style-type: none">Western blotting: 1:50-400 Immunocytochemistry in formalin fixed cells: 1:50-500 Immunohistochemistry in formalin fixed frozen section: 1:50-500 Immunohistochemistry in paraffin section: 1:10-100 Enzyme-linked Immunosorbent Assay: 1:100-1:5000 Optimal working dilutions must be determined by end user.
Comment:	The thermal stability is described by the loss rate. The loss rate was determined by accelerated thermal degradation test, that is, incubate the protein at 37°C for 48h, and no obvious degradation and precipitation were observed. The loss rate is less than 5% within the expiration date under appropriate storage condition.
Restrictions:	For Research Use only

Handling

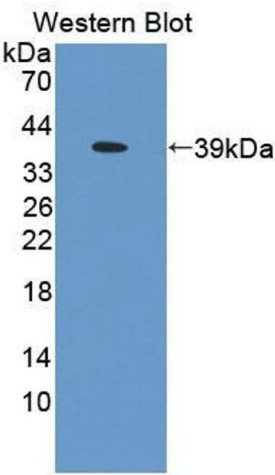
Format:	Liquid
Concentration:	Lot specific
Buffer:	PBS, pH 7.4, containing 0.02 % Sodium azide, 50 % glycerol.

Images



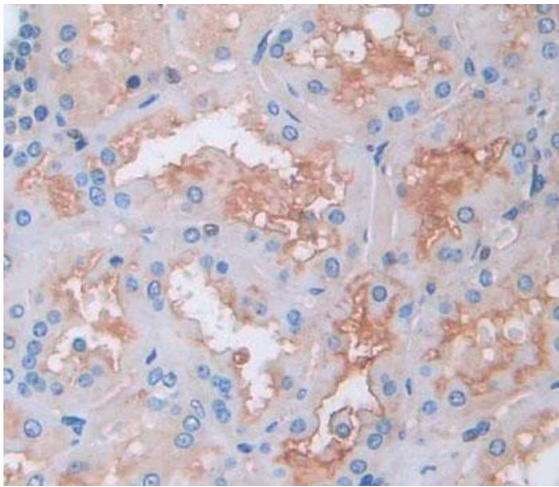
Western Blotting

Image 1. Western Blot; Sample: Mouse Liver lysate; Primary Ab: 1µg/ml Rabbit Anti-Human SSRa Antibody Second Ab: 0.2µg/mL HRP-Linked Caprine Anti-Rabbit IgG Polyclonal Antibody (Catalog: SAA544Rb19)



Western Blotting

Image 2. Figure. Western Blot; Sample: Recombinant protein.



Immunohistochemistry

Image 3. Used in DAB staining on formalin fixed paraffin-embedded kidney tissue