



[Go to Product page](#)

Datasheet for ABIN5014326  
**anti-SLAMF1 antibody (AA 17-227)**

2 Images

Overview

Quantity:	100 µL
Target:	SLAMF1
Binding Specificity:	AA 17-227
Reactivity:	Rat
Host:	Rabbit
Clonality:	Polyclonal
Conjugate:	This SLAMF1 antibody is un-conjugated
Application:	Western Blotting (WB), Immunohistochemistry (IHC), Immunocytochemistry (ICC)

Product Details

Immunogen:	SLAMF1 (Leu17-Trp227)
Isotype:	IgG
Specificity:	The antibody is a rabbit polyclonal antibody raised against SLAMF1. It has been selected for its ability to recognize SLAMF1 in immunohistochemical staining and western blotting.
Purification:	Antigen-specific affinity chromatography

Target Details

Target:	SLAMF1
Alternative Name:	Signaling Lymphocytic Activation Molecule Family, Member 1 (SLAMF1) ( <a href="#">SLAMF1 Products</a> )
Background:	Alternative Names: CD150, SLAMF1, CDw150, SLAM, Signaling lymphocytic activation molecule

## Application Details

Application Notes: • Western blotting: 1:50-400 Immunocytochemistry in formalin fixed cells: 1:50-500 Immunohistochemistry in formalin fixed frozen section: 1:50-500 Immunohistochemistry in paraffin section: 1:10-100 Enzyme-linked Immunosorbent Assay: 1:100-1:5000 Optimal working dilutions must be determined by end user.

Comment: The thermal stability is described by the loss rate. The loss rate was determined by accelerated thermal degradation test, that is, incubate the protein at 37°C for 48h, and no obvious degradation and precipitation were observed. The loss rate is less than 5% within the expiration date under appropriate storage condition.

Restrictions: For Research Use only

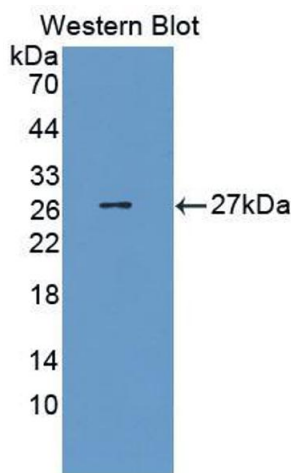
## Handling

Format: Liquid

Concentration: Lot specific

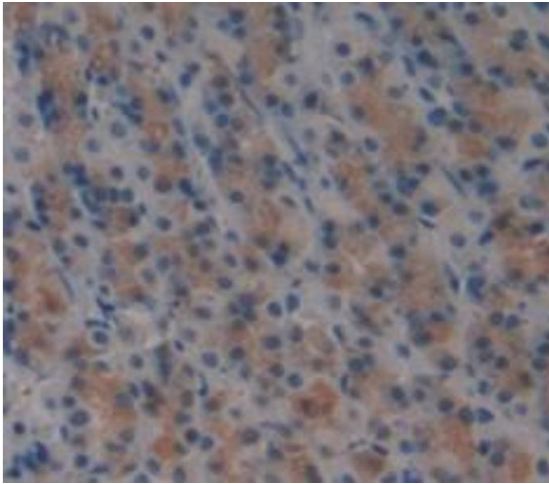
Buffer: PBS, pH 7.4, containing 0.02 % Sodium azide, 50 % glycerol.

## Images



### Western Blotting

**Image 1.** Figure. Western Blot; Sample: Recombinant protein.



### Immunohistochemistry

**Image 2.** Used in DAB staining on formalin fixed paraffin-embedded Kidney tissue