

Datasheet for ABIN5014335
anti-SRI antibody (AA 29-169)[Go to Product page](#)

2 Images

1 Publication

Overview

Quantity:	100 µL
Target:	SRI
Binding Specificity:	AA 29-169
Reactivity:	Human
Host:	Rabbit
Clonality:	Polyclonal
Conjugate:	This SRI antibody is un-conjugated
Application:	Western Blotting (WB), Immunohistochemistry (IHC), Immunocytochemistry (ICC)

Product Details

Immunogen:	SRI (Gly29-Leu169)
Isotype:	IgG
Specificity:	The antibody is a rabbit polyclonal antibody raised against SRI. It has been selected for its ability to recognize SRI in immunohistochemical staining and western blotting.
Purification:	Antigen-specific affinity chromatography

Target Details

Target:	SRI
Abstract:	SRI Products
Background:	Alternative Names: SCN, CP-22, V19, 22 kDa protein

Target Details

Pathways: [Transition Metal Ion Homeostasis](#), [Maintenance of Protein Location](#), [Negative Regulation of Transporter Activity](#)

Application Details

Application Notes:

- Western blotting: 1:50-400 Immunocytochemistry in formalin fixed cells: 1:50-500 Immunohistochemistry in formalin fixed frozen section: 1:50-500 Immunohistochemistry in paraffin section: 1:10-100 Enzyme-linked Immunosorbent Assay: 1:100-1:5000 Optimal working dilutions must be determined by end user.

Comment: The thermal stability is described by the loss rate. The loss rate was determined by accelerated thermal degradation test, that is, incubate the protein at 37°C for 48h, and no obvious degradation and precipitation were observed. The loss rate is less than 5% within the expiration date under appropriate storage condition.

Restrictions: For Research Use only

Handling

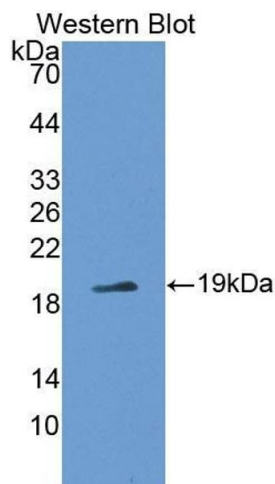
Format: Liquid

Concentration: Lot specific

Buffer: PBS, pH 7.4, containing 0.02 % Sodium azide, 50 % glycerol.

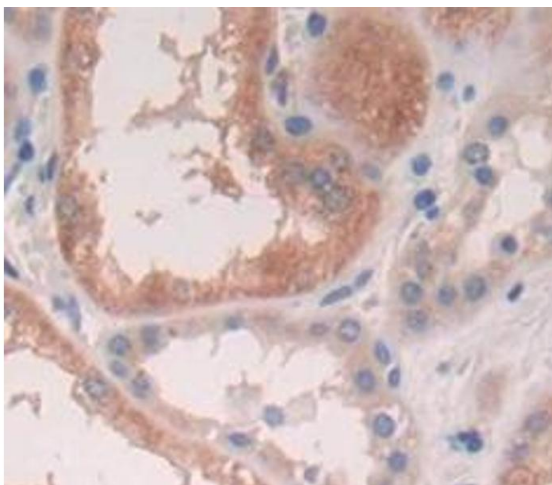
Publications

Product cited in: Pasternack, Polzer, Gemoll, Kümpers, Sauer, Lazar-Karsten, Hinrichs, Bohnet, Perner, Dressler, Kirfel: "Proteomic analyses identify HK1 and ATP5A to be overexpressed in distant metastases of lung adenocarcinomas compared to matched primary tumors." in: **Scientific reports**, Vol. 13, Issue 1, pp. 20948, (2023) ([PubMed](#)).



Western Blotting

Image 1. Figure. Western Blot; Sample: Recombinant protein.



Immunohistochemistry

Image 2. Used in DAB staining on formalin fixed paraffin-embedded Kidney tissue