

Datasheet for ABIN5014337
anti-SP100 antibody (AA 116-333)

3 Images

[Go to Product page](#)

Overview

Quantity:	100 µL
Target:	SP100
Binding Specificity:	AA 116-333
Reactivity:	Rat
Host:	Rabbit
Clonality:	Polyclonal
Conjugate:	This SP100 antibody is un-conjugated
Application:	Western Blotting (WB), Immunohistochemistry (IHC), Immunocytochemistry (ICC)

Product Details

Immunogen:	Sp100 (Phe116-Pro333)
Isotype:	IgG
Specificity:	The antibody is a rabbit polyclonal antibody raised against Sp100. It has been selected for its ability to recognize Sp100 in immunohistochemical staining and western blotting.
Purification:	Antigen-specific affinity chromatography

Target Details

Target:	SP100
Abstract:	SP100 Products
Background:	Alternative Names: Speckled 100 kDa, Nuclear dot-associated Sp100 protein

Target Details

Pathways: [Retinoic Acid Receptor Signaling Pathway](#)

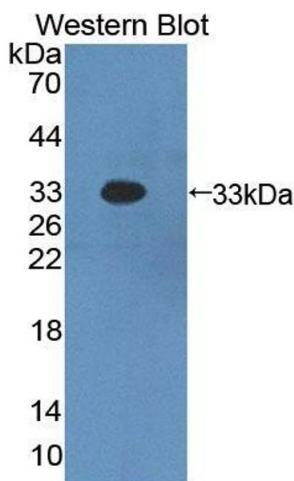
Application Details

Application Notes:	<ul style="list-style-type: none">Western blotting: 1:50-400 Immunocytochemistry in formalin fixed cells: 1:50-500 Immunohistochemistry in formalin fixed frozen section: 1:50-500 Immunohistochemistry in paraffin section: 1:10-100 Enzyme-linked Immunosorbent Assay: 1:100-1:5000 Optimal working dilutions must be determined by end user.
Comment:	The thermal stability is described by the loss rate. The loss rate was determined by accelerated thermal degradation test, that is, incubate the protein at 37°C for 48h, and no obvious degradation and precipitation were observed. The loss rate is less than 5% within the expiration date under appropriate storage condition.
Restrictions:	For Research Use only

Handling

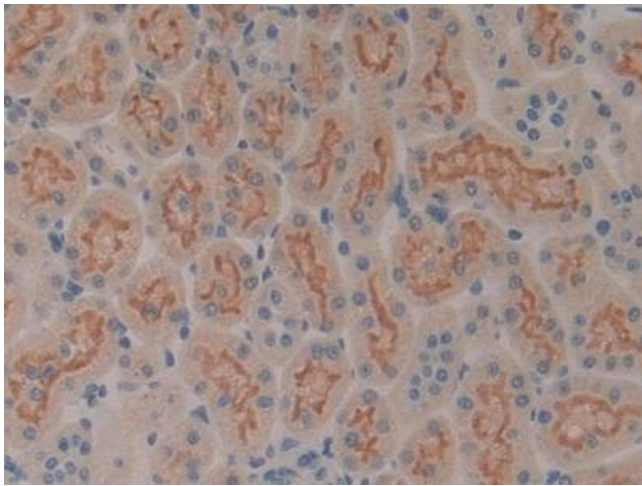
Format:	Liquid
Concentration:	Lot specific
Buffer:	PBS, pH 7.4, containing 0.02 % Sodium azide, 50 % glycerol.

Images



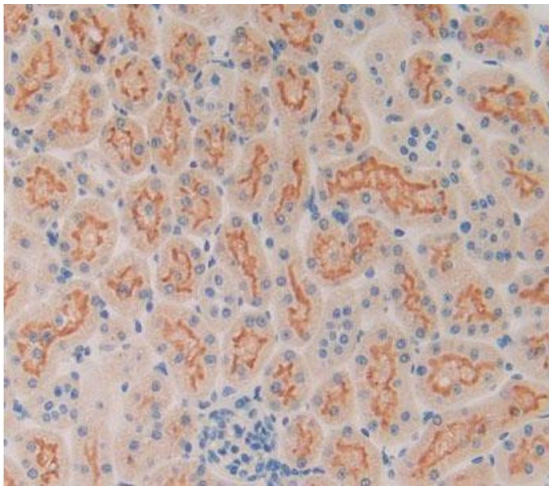
Western Blotting

Image 1. Figure. Western Blot; Sample: Recombinant protein.



Immunohistochemistry

Image 2. DAB staining on IHC-P; Samples: Rat Kidney Tissue



Immunohistochemistry

Image 3. Used in DAB staining on formalin fixed paraffin-embedded kidney tissue