

Datasheet for ABIN5014339  
**anti-SPA17 antibody (AA 1-140)**

## 3 Images

[Go to Product page](#)

## Overview

Quantity:	100 µL
Target:	SPA17
Binding Specificity:	AA 1-140
Reactivity:	Rat
Host:	Rabbit
Clonality:	Polyclonal
Conjugate:	This SPA17 antibody is un-conjugated
Application:	Western Blotting (WB), Immunohistochemistry (IHC), Immunocytochemistry (ICC)

## Product Details

Immunogen:	Sp17 (Met1-Glu140)
Isotype:	IgG
Specificity:	The antibody is a rabbit polyclonal antibody raised against Sp17. It has been selected for its ability to recognize Sp17 in immunohistochemical staining and western blotting.
Purification:	Antigen-specific affinity chromatography

## Target Details

Target:	SPA17
Alternative Name:	Sperm Protein 17 (Sp17) ( <a href="#">SPA17 Products</a> )
Background:	Alternative Names: SPA17, SP17, SP17-1, CT22, Sperm Autoantigenic Protein 17, Cancer/Testis

## Target Details

Antigen 22

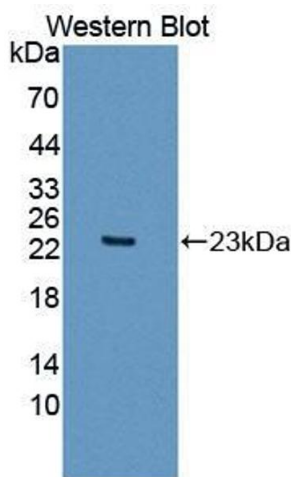
## Application Details

Application Notes:	<ul style="list-style-type: none"><li>Western blotting: 1:50-400 Immunocytochemistry in formalin fixed cells: 1:50-500 Immunohistochemistry in formalin fixed frozen section: 1:50-500 Immunohistochemistry in paraffin section: 1:10-100 Enzyme-linked Immunosorbent Assay: 1:100-1:5000 Optimal working dilutions must be determined by end user.</li></ul>
Comment:	The thermal stability is described by the loss rate. The loss rate was determined by accelerated thermal degradation test, that is, incubate the protein at 37&degC for 48h, and no obvious degradation and precipitation were observed. The loss rate is less than 5% within the expiration date under appropriate storage condition.
Restrictions:	For Research Use only

## Handling

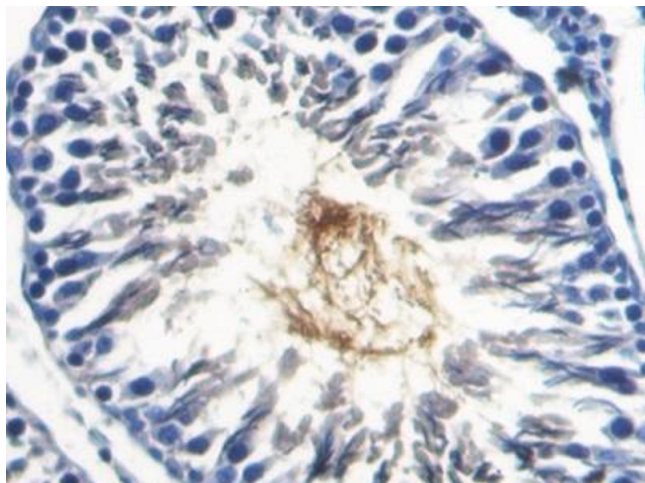
Format:	Liquid
Concentration:	Lot specific
Buffer:	PBS, pH 7.4, containing 0.02 % Sodium azide, 50 % glycerol.

## Images



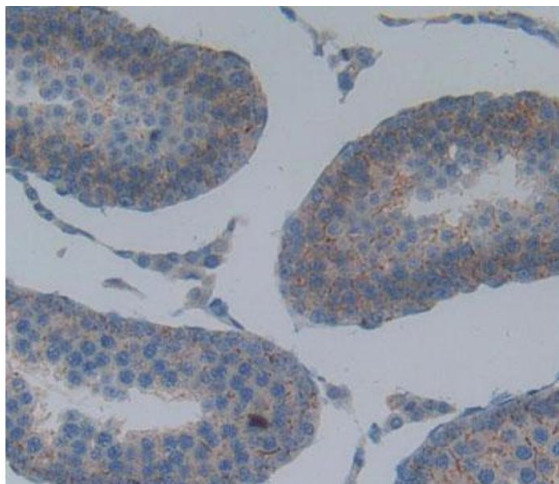
### Western Blotting

**Image 1.** Figure. Western Blot; Sample: Recombinant protein.



#### Immunohistochemistry

**Image 2.** DAB staining on IHC-P; Samples: Rat Testis Tissue



#### Immunohistochemistry

**Image 3.** Used in DAB staining on formalin fixed paraffin-embedded Kidney tissue