

Datasheet for ABIN5014341
anti-SPA17 antibody (AA 1-143)

3 Images

[Go to Product page](#)

Overview

Quantity:	100 µL
Target:	SPA17
Binding Specificity:	AA 1-143
Reactivity:	Human
Host:	Rabbit
Clonality:	Polyclonal
Conjugate:	This SPA17 antibody is un-conjugated
Application:	Western Blotting (WB), Immunohistochemistry (IHC), Immunoprecipitation (IP), Immunocytochemistry (ICC)

Product Details

Purpose:	Polyclonal Antibody to Sperm Protein 17 (Sp17)
Immunogen:	Recombinant Sperm Protein 17 (Sp17)
Isotype:	IgG
Specificity:	The antibody is a rabbit polyclonal antibody raised against Sp17. It has been selected for its ability to recognize Sp17 in immunohistochemical staining and western blotting.
Cross-Reactivity:	Mouse, Rat
Purification:	Antigen-specific affinity chromatography followed by Protein A affinity chromatography

Target Details

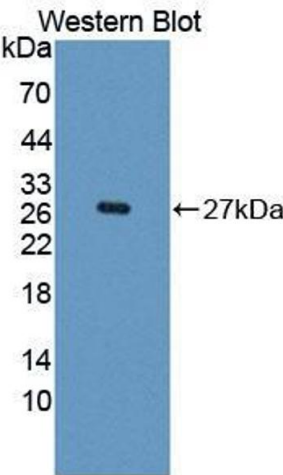
Target:	SPA17
Alternative Name:	Sperm Protein 17 (SPA17 Products)
Background:	SPA17, SP17, SP17-1, CT22, Sperm Autoantigenic Protein 17, Cancer/Testis Antigen 22

Application Details

Application Notes:	Western blotting: 0.5-2 µg/mL Immunohistochemistry: 5-20 µg/mL Immunocytochemistry: 5-20 µg/mL Optimal working dilutions must be determined by end user.
Comment:	The thermal stability is described by the loss rate. The loss rate was determined by accelerated thermal degradation test, that is, incubate the protein at 37°C for 48h, and no obvious degradation and precipitation were observed. The loss rate is less than 5% within the expiration date under appropriate storage condition.
Restrictions:	For Research Use only

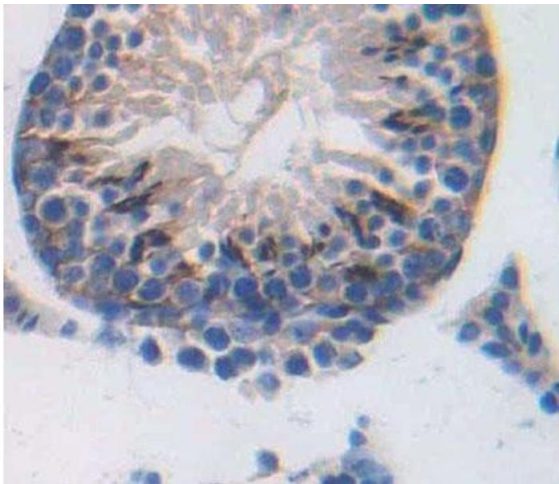
Handling

Format:	Liquid
Concentration:	Lot specific
Buffer:	PBS, pH 7.4, containing 0.02 % Sodium azide, 50 % glycerol.
Preservative:	Sodium azide
Storage:	4 °C,-20 °C
Storage Comment:	Store at 4°C for frequent use. Stored at -20°C in a manual defrost freezer for two year without detectable loss of activity. Avoid repeated freeze-thaw cycles.
Expiry Date:	24 months



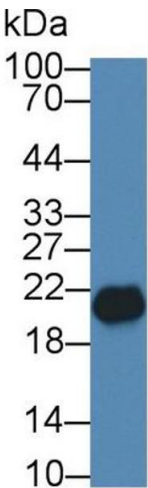
Western Blotting

Image 1. Figure. Western Blot; Sample: Recombinant protein.



Immunohistochemistry

Image 2. Used in DAB staining on fromalin fixed paraffin-embedded Kidney tissue



Western Blotting

Image 3. Western Blot; Sample: Rat Testis lysate; Primary Ab: 1µg/ml Rabbit Anti-Human Sp17 Antibody Second Ab: 0.2µg/mL HRP-Linked Caprine Anti-Rabbit IgG Polyclonal Antibody (Catalog: SAA544Rb19)