

Datasheet for ABIN5014346  
**anti-SERPINB4 antibody (AA 38-215)**



[Go to Product page](#)

**3** Images

## Overview

Quantity:	100 µL
Target:	SERPINB4
Binding Specificity:	AA 38-215
Reactivity:	Human
Host:	Rabbit
Clonality:	Polyclonal
Conjugate:	This SERPINB4 antibody is un-conjugated
Application:	Western Blotting (WB), Immunohistochemistry (IHC)

## Product Details

Purpose:	Polyclonal Antibody to Squamous Cell Carcinoma Antigen 1/2 (SCCA1/SCCA2)
Immunogen:	RPB814Hu02Recombinant Squamous Cell Carcinoma Antigen 1/2 (SCCA1/SCCA2)
Isotype:	IgG
Specificity:	The antibody is a rabbit polyclonal antibody raised against SCCA1/SCCA2. It has been selected for its ability to recognize SCCA1/SCCA2 in immunohistochemical staining and western blotting.
Purification:	Antigen-specific affinity chromatography followed by Protein A affinity chromatography

## Target Details

Target:	SERPINB4
---------	----------

## Target Details

Alternative Name:	SCCA1/SCCA2 ( <a href="#">SERPINB4 Products</a> )
Background:	SERPINB3, Serpin B3, SCCA1/SCCA2 fusion protein

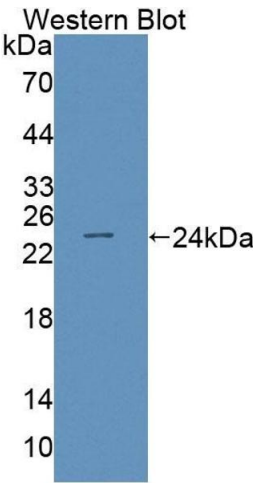
## Application Details

Application Notes:	Western blotting: 0.01-2 µg/mL,Immunohistochemistry: 5-20 µg/mL,Optimal working dilutions must be determined by end user.
Comment:	The thermal stability is described by the loss rate. The loss rate was determined by accelerated thermal degradation test, that is, incubate the protein at 37°C for 48h, and no obvious degradation and precipitation were observed. The loss rate is less than 5% within the expiration date under appropriate storage condition.
Restrictions:	For Research Use only

## Handling

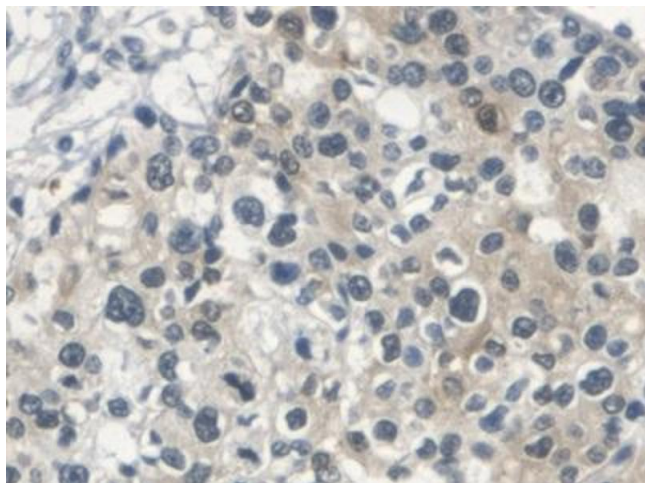
Format:	Liquid
Concentration:	0.5 mg/mL
Buffer:	0.01M PBS, pH 7.4, containing 0.05 % Proclin-300, 50 % glycerol.
Preservative:	ProClin
Storage:	4 °C,-20 °C
Storage Comment:	Store at 4°C for frequent use. Stored at -20°C in a manual defrost freezer for two year without detectable loss of activity. Avoid repeated freeze-thaw cycles.

## Images



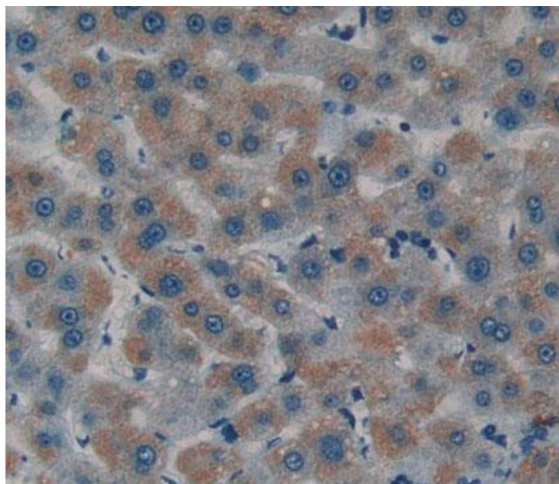
### Western Blotting

**Image 1.** Figure. Western Blot; Sample: Recombinant protein.



#### Immunohistochemistry

**Image 2.** DAB staining on IHC-P; Samples: Human Prostate cancer Tissue



#### Immunohistochemistry

**Image 3.** Used in DAB staining on formalin fixed paraffin-embedded Kidney tissue