



[Go to Product page](#)

Datasheet for ABIN5014351  
**anti-SRPK3 antibody (AA 220-506)**

2 Images

Overview

Quantity:	100 µL
Target:	SRPK3
Binding Specificity:	AA 220-506
Reactivity:	Mouse
Host:	Rabbit
Clonality:	Polyclonal
Conjugate:	This SRPK3 antibody is un-conjugated
Application:	Western Blotting (WB), Immunohistochemistry (IHC), Immunocytochemistry (ICC)

Product Details

Immunogen:	SRPK3 (Cys220-Glu506)
Isotype:	IgG
Specificity:	The antibody is a rabbit polyclonal antibody raised against SRPK3. It has been selected for its ability to recognize SRPK3 in immunohistochemical staining and western blotting.
Purification:	Antigen-specific affinity chromatography

Target Details

Target:	SRPK3
Alternative Name:	SRSF Protein Kinase 3 (SRPK3) ( <a href="#">SRPK3 Products</a> )
Background:	Alternative Names: STK23, MSSK1, Serine/Threonine Kinase 23, SFRS Protein Kinase 3,

## Target Details

Serine/arginine-rich protein-specific kinase 3, Muscle-specific serine kinase 1

## Application Details

Application Notes: • Western blotting: 1:50-400 Immunocytochemistry in formalin fixed cells: 1:50-500 Immunohistochemistry in formalin fixed frozen section: 1:50-500 Immunohistochemistry in paraffin section: 1:10-100 Enzyme-linked Immunosorbent Assay: 1:100-1:5000 Optimal working dilutions must be determined by end user.

Comment: The thermal stability is described by the loss rate. The loss rate was determined by accelerated thermal degradation test, that is, incubate the protein at 37°C for 48h, and no obvious degradation and precipitation were observed. The loss rate is less than 5% within the expiration date under appropriate storage condition.

Restrictions: For Research Use only

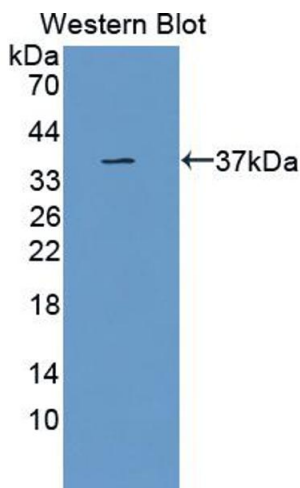
## Handling

Format: Liquid

Concentration: Lot specific

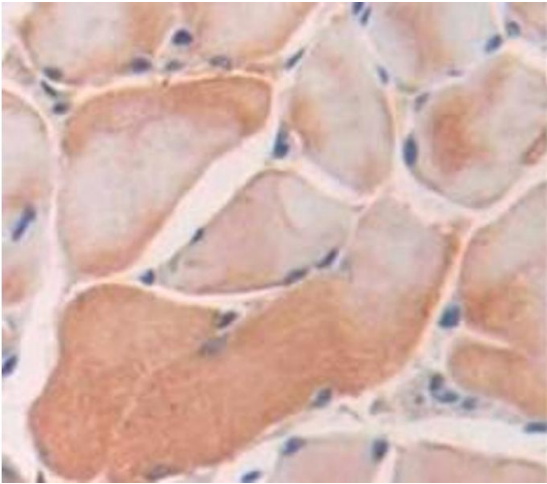
Buffer: PBS, pH 7.4, containing 0.02 % Sodium azide, 50 % glycerol.

## Images



### Western Blotting

**Image 1.** Figure. Western Blot; Sample: Recombinant protein.



### Immunohistochemistry

**Image 2.** Used in DAB staining on formalin fixed paraffin-embedded Kidney tissue