

Datasheet for ABIN5014353
anti-SCP2 antibody (AA 433-547)[Go to Product page](#)

4 Images

Overview

Quantity:	100 µL
Target:	SCP2
Binding Specificity:	AA 433-547
Reactivity:	Rat
Host:	Rabbit
Clonality:	Polyclonal
Conjugate:	This SCP2 antibody is un-conjugated
Application:	Western Blotting (WB), Immunohistochemistry (IHC), Immunocytochemistry (ICC)

Product Details

Immunogen:	SCP2 (Ala433-Leu547)
Isotype:	IgG
Specificity:	The antibody is a rabbit polyclonal antibody raised against SCP2. It has been selected for its ability to recognize SCP2 in immunohistochemical staining and western blotting.
Purification:	Antigen-specific affinity chromatography

Target Details

Target:	SCP2
Abstract:	SCP2 Products
Background:	Alternative Names: NLTP, NSL-TP, SCPX, SCP-chi, Non-Specific Lipid-Transfer Protein,

Target Details

Propanoyl-CoA C-acyltransferase, Sterol carrier protein X

Pathways: [C21-Steroid Hormone Metabolic Process](#), [Monocarboxylic Acid Catabolic Process](#)

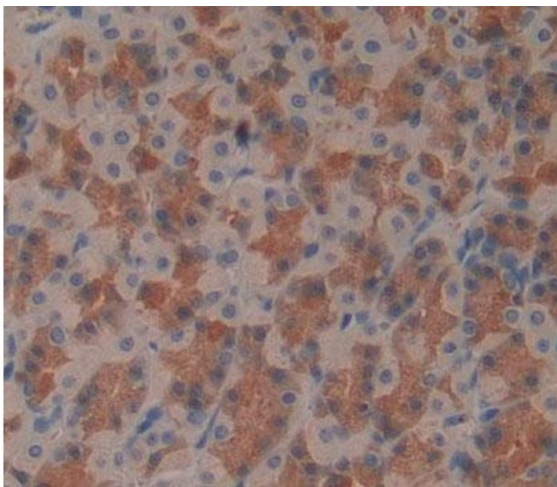
Application Details

Application Notes:	<ul style="list-style-type: none">Western blotting: 1:50-400 Immunocytochemistry in formalin fixed cells: 1:50-500 Immunohistochemistry in formalin fixed frozen section: 1:50-500 Immunohistochemistry in paraffin section: 1:10-100 Enzyme-linked Immunosorbent Assay: 1:100-1:5000 Optimal working dilutions must be determined by end user.
Comment:	The thermal stability is described by the loss rate. The loss rate was determined by accelerated thermal degradation test, that is, incubate the protein at 37°C for 48h, and no obvious degradation and precipitation were observed. The loss rate is less than 5% within the expiration date under appropriate storage condition.
Restrictions:	For Research Use only

Handling

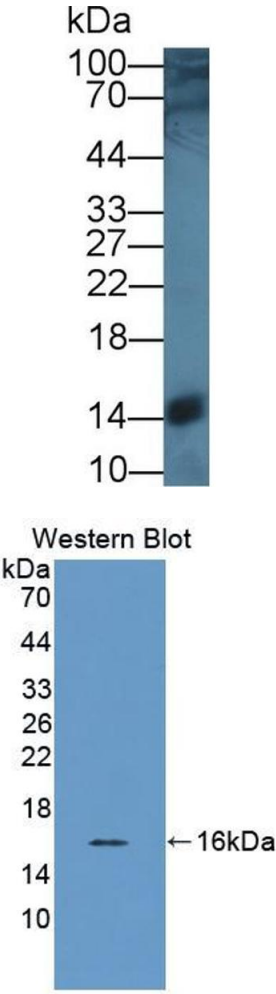
Format:	Liquid
Concentration:	Lot specific
Buffer:	PBS, pH 7.4, containing 0.02 % Sodium azide, 50 % glycerol.

Images



Immunohistochemistry

Image 1. Used in DAB staining on formalin fixed paraffin-embedded stomach tissue



Western Blotting

Image 2. Western Blot; Sample: Rat Liver lysate; Primary Ab: 1µg/ml Rabbit Anti-Rat SCP2 Antibody Second Ab: 0.2µg/mL HRP-Linked Caprine Anti-Rabbit IgG Polyclonal Antibody (Catalog: SAA544Rb19)

Western Blotting

Image 3. Figure. Western Blot; Sample: Recombinant protein.

Please check the [product details page](#) for more images. Overall 4 images are available for ABIN5014353.