



[Go to Product page](#)

Datasheet for ABIN5014419
anti-TOP1MT antibody (AA 1-238)

2 Images

Overview

Quantity:	100 µL
Target:	TOP1MT
Binding Specificity:	AA 1-238
Reactivity:	Rat
Host:	Rabbit
Clonality:	Polyclonal
Conjugate:	This TOP1MT antibody is un-conjugated
Application:	Western Blotting (WB), Immunohistochemistry (IHC), Immunocytochemistry (ICC)

Product Details

Immunogen:	TOP1MT (Met1-Thr238)
Isotype:	IgG
Specificity:	The antibody is a rabbit polyclonal antibody raised against TOP1MT. It has been selected for its ability to recognize TOP1MT in immunohistochemical staining and western blotting.
Purification:	Antigen-specific affinity chromatography

Target Details

Target:	TOP1MT
Alternative Name:	Topoisomerase I, Mitochondrial (TOP1MT) (TOP1MT Products)
Background:	Alternative Names: DNA topoisomerase I, mitochondrial

Application Details

Application Notes: • Western blotting: 1:50-400 Immunocytochemistry in formalin fixed cells: 1:50-500 Immunohistochemistry in formalin fixed frozen section: 1:50-500 Immunohistochemistry in paraffin section: 1:10-100 Enzyme-linked Immunosorbent Assay: 1:100-1:5000 Optimal working dilutions must be determined by end user.

Comment: The thermal stability is described by the loss rate. The loss rate was determined by accelerated thermal degradation test, that is, incubate the protein at 37°C for 48h, and no obvious degradation and precipitation were observed. The loss rate is less than 5% within the expiration date under appropriate storage condition.

Restrictions: For Research Use only

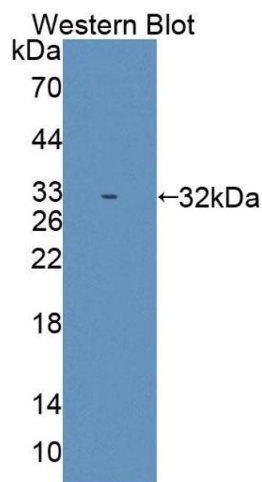
Handling

Format: Liquid

Concentration: Lot specific

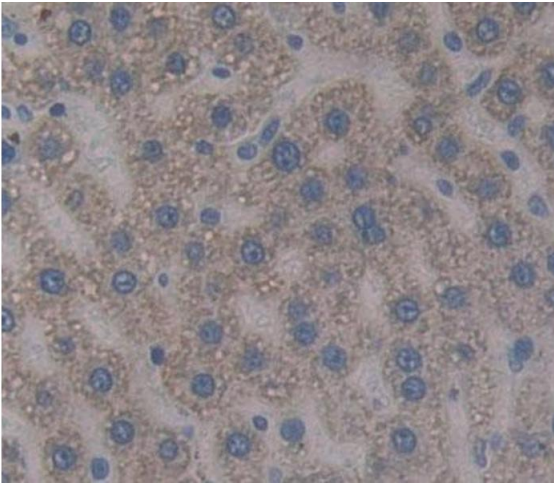
Buffer: PBS, pH 7.4, containing 0.02 % Sodium azide, 50 % glycerol.

Images



Western Blotting

Image 1. Figure. Western Blot; Sample: Recombinant protein.



Immunohistochemistry

Image 2. Used in DAB staining on formalin fixed paraffin-embedded liver tissue