

Datasheet for ABIN5014434
anti-DP1 antibody (AA 6-410)[Go to Product page](#)

3 Images

Overview

Quantity:	100 µL
Target:	DP1 (TFDP1)
Binding Specificity:	AA 6-410
Reactivity:	Human
Host:	Rabbit
Clonality:	Polyclonal
Conjugate:	This DP1 antibody is un-conjugated
Application:	Western Blotting (WB), Immunohistochemistry (IHC), Immunocytochemistry (ICC)

Product Details

Immunogen:	TFDP1 (Gly6-Asp410)
Isotype:	IgG
Specificity:	The antibody is a rabbit polyclonal antibody raised against TFDP1. It has been selected for its ability to recognize TFDP1 in immunohistochemical staining and western blotting.
Purification:	Antigen-specific affinity chromatography

Target Details

Target:	DP1 (TFDP1)
Alternative Name:	Transcription Factor Dp1 (TFDP1) (TFDP1 Products)
Background:	Alternative Names: DP1, DRTF1, DRTF1-polypeptide 1, E2F dimerization partner 1

Target Details

Pathways: [Cell Division Cycle, Mitotic G1-G1/S Phases](#)

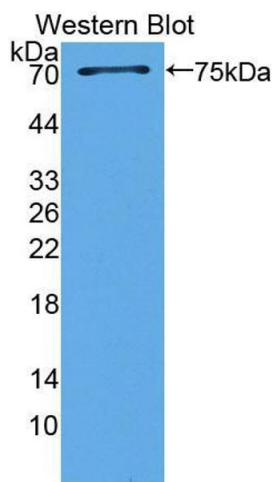
Application Details

Application Notes:	<ul style="list-style-type: none">Western blotting: 1:50-400 Immunocytochemistry in formalin fixed cells: 1:50-500 Immunohistochemistry in formalin fixed frozen section: 1:50-500 Immunohistochemistry in paraffin section: 1:10-100 Enzyme-linked Immunosorbent Assay: 1:100-1:5000 Optimal working dilutions must be determined by end user.
Comment:	The thermal stability is described by the loss rate. The loss rate was determined by accelerated thermal degradation test, that is, incubate the protein at 37°C for 48h, and no obvious degradation and precipitation were observed. The loss rate is less than 5% within the expiration date under appropriate storage condition.
Restrictions:	For Research Use only

Handling

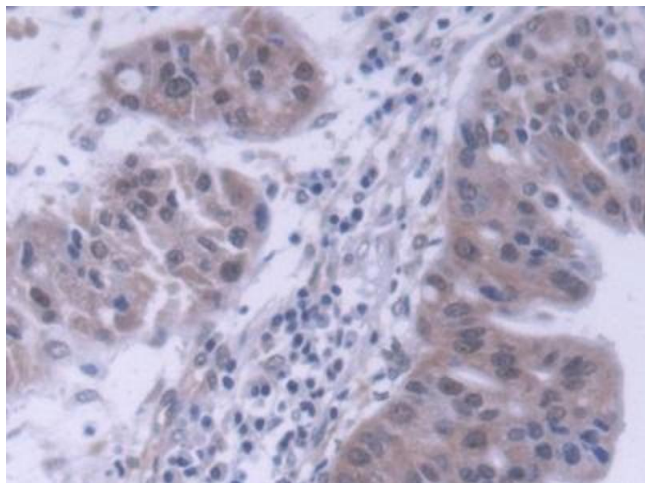
Format:	Liquid
Concentration:	Lot specific
Buffer:	PBS, pH 7.4, containing 0.02 % Sodium azide, 50 % glycerol.

Images



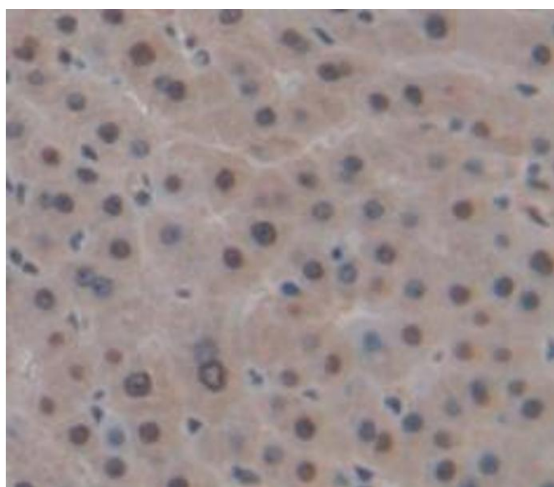
Western Blotting

Image 1. Figure. Western Blot; Sample: Recombinant protein.



Immunohistochemistry

Image 2. DAB staining on IHC-P; Samples: Human Liver cancer Tissue



Immunohistochemistry

Image 3. Used in DAB staining on formalin fixed paraffin-embedded Kidney tissue