



[Go to Product page](#)

Datasheet for ABIN5014445

anti-STING/TMEM173 antibody (AA 160-371)

3 Images

Overview

Quantity:	100 µL
Target:	STING/TMEM173 (TMEM173)
Binding Specificity:	AA 160-371
Reactivity:	Mouse
Host:	Rabbit
Clonality:	Polyclonal
Conjugate:	This STING/TMEM173 antibody is un-conjugated
Application:	Western Blotting (WB), Immunohistochemistry (IHC), Immunocytochemistry (ICC)

Product Details

Immunogen:	TMEM173 (Trp160-Leu371)
Isotype:	IgG
Specificity:	The antibody is a rabbit polyclonal antibody raised against TMEM173. It has been selected for its ability to recognize TMEM173 in immunohistochemical staining and western blotting.
Purification:	Antigen-specific affinity chromatography

Target Details

Target:	STING/TMEM173 (TMEM173)
Abstract:	TMEM173 Products
Background:	Alternative Names: NET23, ERIS, MPYS, MITA, STING, Endoplasmic Reticulum Interferon

Target Details

Stimulator, Stimulator Of Interferon Genes Protein, Mediator of IRF3 activation

Pathways: [Activation of Innate immune Response](#)

Application Details

Application Notes:

- Western blotting: 1:50-400 Immunocytochemistry in formalin fixed cells: 1:50-500 Immunohistochemistry in formalin fixed frozen section: 1:50-500 Immunohistochemistry in paraffin section: 1:10-100 Enzyme-linked Immunosorbent Assay: 1:100-1:5000 Optimal working dilutions must be determined by end user.

Comment: The thermal stability is described by the loss rate. The loss rate was determined by accelerated thermal degradation test, that is, incubate the protein at 37°C for 48h, and no obvious degradation and precipitation were observed. The loss rate is less than 5% within the expiration date under appropriate storage condition.

Restrictions: For Research Use only

Handling

Format: Liquid

Concentration: Lot specific

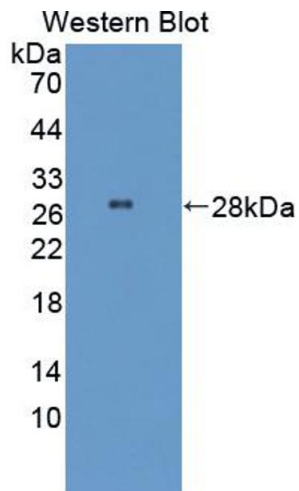
Buffer: PBS, pH 7.4, containing 0.02 % Sodium azide, 50 % glycerol.

Images



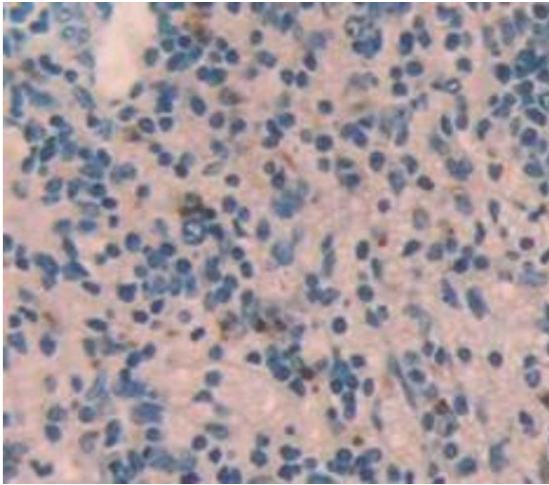
Western Blotting

Image 1. Western Blot; Sample: Mouse Spleen lysate; Primary Ab: 3µg/ml Rabbit Anti-Mouse TMEM173 Antibody; Second Ab: 0.2µg/mL HRP-Linked Caprine Anti-Rabbit IgG Polyclonal Antibody;(Catalog: SAA544Rb19)



Western Blotting

Image 2. Figure. Western Blot; Sample: Recombinant protein.



Immunohistochemistry

Image 3. Used in DAB staining on formalin fixed paraffin-embedded Kidney tissue