

Datasheet for ABIN5014477

anti-DcR1 antibody (AA 32-244)**2** Images[Go to Product page](#)

Overview

Quantity:	100 µL
Target:	DcR1 (TNFRSF10C)
Binding Specificity:	AA 32-244
Reactivity:	Human
Host:	Rabbit
Clonality:	Polyclonal
Conjugate:	This DcR1 antibody is un-conjugated
Application:	Western Blotting (WB), Immunohistochemistry (IHC), Immunocytochemistry (ICC)

Product Details

Immunogen:	TNFRSF10C (Glu32-Thr244)
Isotype:	IgG
Specificity:	The antibody is a rabbit polyclonal antibody raised against TNFRSF10C. It has been selected for its ability to recognize TNFRSF10C in immunohistochemical staining and western blotting.
Purification:	Antigen-specific affinity chromatography

Target Details

Target:	DcR1 (TNFRSF10C)
Abstract:	TNFRSF10C Products
Background:	Alternative Names: CD263, TNFRSF10-C, DCR1, LIT, TRAILR3, TRID, Decoy Receptor 1, Tnf-

Target Details

Related Apoptosis-Inducing Ligand Receptor 3, Trail Receptor Without An Intracellular Domain

Pathways: [Apoptosis](#)

Application Details

Application Notes:

- Western blotting: 1:50-400 Immunocytochemistry in formalin fixed cells: 1:50-500 Immunohistochemistry in formalin fixed frozen section: 1:50-500 Immunohistochemistry in paraffin section: 1:10-100 Enzyme-linked Immunosorbent Assay: 1:100-1:5000 Optimal working dilutions must be determined by end user.

Comment: The thermal stability is described by the loss rate. The loss rate was determined by accelerated thermal degradation test, that is, incubate the protein at 37°C for 48h, and no obvious degradation and precipitation were observed. The loss rate is less than 5% within the expiration date under appropriate storage condition.

Restrictions: For Research Use only

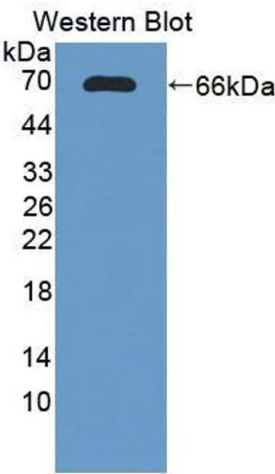
Handling

Format: Liquid

Concentration: Lot specific

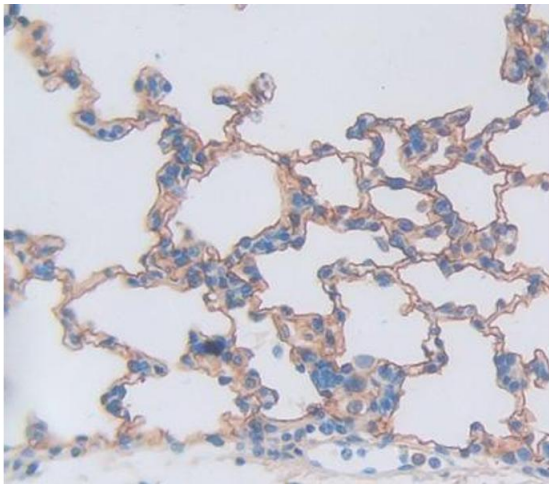
Buffer: PBS, pH 7.4, containing 0.02 % Sodium azide, 50 % glycerol.

Images



Western Blotting

Image 1. Figure. Western Blot; Sample: Recombinant protein.



Immunohistochemistry

Image 2. Used in DAB staining on formalin fixed paraffin-embedded Kidney tissue