



[Go to Product page](#)

Datasheet for ABIN5014491
anti-UQCRB antibody (AA 4-111)

2 Images

Overview

Quantity:	100 µL
Target:	UQCRB
Binding Specificity:	AA 4-111
Reactivity:	Rat
Host:	Rabbit
Clonality:	Polyclonal
Conjugate:	This UQCRB antibody is un-conjugated
Application:	Western Blotting (WB), Immunohistochemistry (IHC), Immunocytochemistry (ICC)

Product Details

Immunogen:	UQCRB (Arg4-Lys111)
Isotype:	IgG
Specificity:	The antibody is a rabbit polyclonal antibody raised against UQCRB. It has been selected for its ability to recognize UQCRB in immunohistochemical staining and western blotting.
Purification:	Antigen-specific affinity chromatography

Target Details

Target:	UQCRB
Alternative Name:	Ubiquinol Cytochrome C Reductase Binding Protein (UQCRB) (UQCRB Products)
Background:	Alternative Names: QP-C, QPC, UQBC, UQBP, UQPC, Ubiquinol-Cytochrome C

Target Details

Reductase,Complex III Subunit VI, Ubiquinol-cytochrome c reductase complex 14 kDa protein

Application Details

Application Notes:

- Western blotting: 1:50-400 Immunocytochemistry in formalin fixed cells: 1:50-500 Immunohistochemistry in formalin fixed frozen section: 1:50-500 Immunohistochemistry in paraffin section: 1:10-100 Enzyme-linked Immunosorbent Assay: 1:100-1:5000 Optimal working dilutions must be determined by end user.

Comment:

The thermal stability is described by the loss rate. The loss rate was determined by accelerated thermal degradation test, that is, incubate the protein at 37°C for 48h, and no obvious degradation and precipitation were observed. The loss rate is less than 5% within the expiration date under appropriate storage condition.

Restrictions:

For Research Use only

Handling

Format:

Liquid

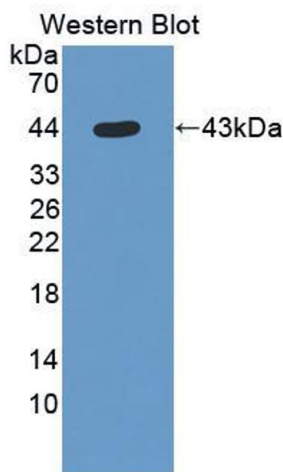
Concentration:

Lot specific

Buffer:

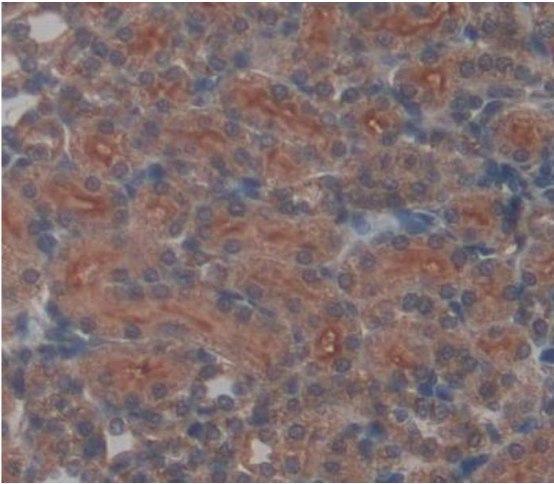
PBS, pH 7.4, containing 0.02 % Sodium azide, 50 % glycerol.

Images



Western Blotting

Image 1. Figure. Western Blot; Sample: Recombinant protein.



Immunohistochemistry

Image 2. Used in DAB staining on formalin fixed paraffin-embedded kidney tissue