



[Go to Product page](#)

Datasheet for ABIN5014526  
**anti-VAV1 antibody (AA 426-696)**

3 Images

### Overview

|                      |  |
|----------------------|--|
| Quantity:            | 100 µL   |
| Target:              | VAV1   |
| Binding Specificity: | AA 426-696   |
| Reactivity:          | Human  |
| Host:                | Rabbit   |
| Clonality:           | Polyclonal   |
| Conjugate:           | This VAV1 antibody is un-conjugated  |
| Application:         | Western Blotting (WB), Immunohistochemistry (IHC), Immunocytochemistry (ICC) |

### Product Details

|               |  |
|---------------|--|
| Immunogen:    | VAV1 (Leu426-Arg696)   |
| Isotype:      | IgG  |
| Specificity:  | The antibody is a rabbit polyclonal antibody raised against VAV1. It has been selected for its ability to recognize VAV1 in immunohistochemical staining and western blotting. |
| Purification: | Antigen-specific affinity chromatography   |

### Target Details

|             |   |
|-------------|---|
| Target:     | VAV1  |
| Abstract:   | <a href="#">VAV1 Products</a>   |
| Background: | Alternative Names: Proto Oncogene Vav, Vav 1 Guanine Nucleotide Exchange Factor |

## Target Details

Pathways: [TCR Signaling](#), [Fc-epsilon Receptor Signaling Pathway](#), [EGFR Signaling Pathway](#), [Neurotrophin Signaling Pathway](#), [CXCR4-mediated Signaling Events](#), [BCR Signaling](#)

## Application Details

Application Notes: 

- Western blotting: 1:50-400 Immunocytochemistry in formalin fixed cells: 1:50-500 Immunohistochemistry in formalin fixed frozen section: 1:50-500 Immunohistochemistry in paraffin section: 1:10-100 Enzyme-linked Immunosorbent Assay: 1:100-1:5000 Optimal working dilutions must be determined by end user.

Comment: The thermal stability is described by the loss rate. The loss rate was determined by accelerated thermal degradation test, that is, incubate the protein at 37&degC for 48h, and no obvious degradation and precipitation were observed. The loss rate is less than 5% within the expiration date under appropriate storage condition.

Restrictions: For Research Use only

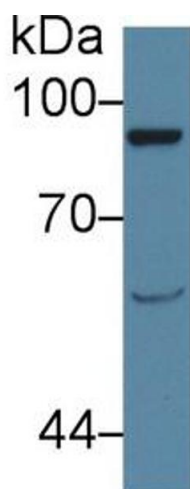
## Handling

Format: Liquid

Concentration: Lot specific

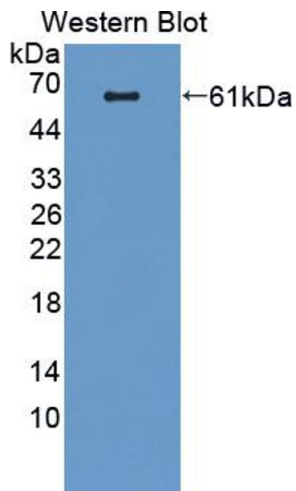
Buffer: PBS, pH 7.4, containing 0.02 % Sodium azide, 50 % glycerol.

## Images



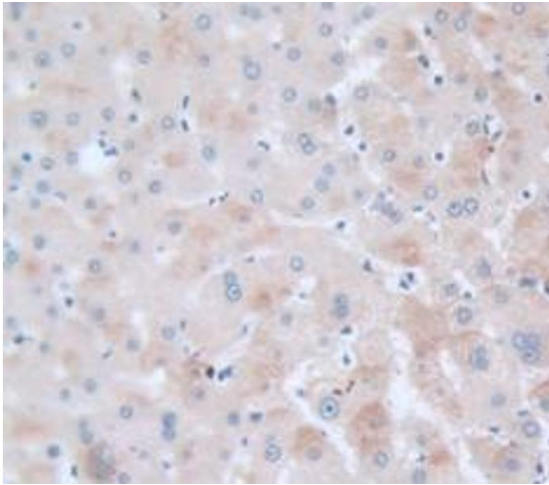
### Western Blotting

**Image 1.** Western Blot; Sample: Rat Serum; Primary Ab: 1µg/ml Rabbit Anti-Rat AMPH Antibody Second Ab: 0.2µg/mL HRP-Linked Caprine Anti-Rabbit IgG Polyclonal Antibody (Catalog: SAA544Rb19)



### Western Blotting

**Image 2.** Figure. Western Blot; Sample: Recombinant protein.



### Immunohistochemistry

**Image 3.** Used in DAB staining on formalin fixed paraffin-embedded Kidney tissue