

Datasheet for ABIN5014538
anti-WNT3A antibody (AA 19-355)



[Go to Product page](#)

2 Images

Overview

Quantity:	100 µL
Target:	WNT3A
Binding Specificity:	AA 19-355
Reactivity:	Cow
Host:	Rabbit
Clonality:	Polyclonal
Conjugate:	This WNT3A antibody is un-conjugated
Application:	Western Blotting (WB), Immunohistochemistry (IHC), Immunocytochemistry (ICC)

Product Details

Immunogen:	WNT3A (Val19-Lys355)
Isotype:	IgG
Specificity:	The antibody is a rabbit polyclonal antibody raised against WNT3A. It has been selected for its ability to recognize WNT3A in immunohistochemical staining and western blotting.
Purification:	Antigen-specific affinity chromatography

Target Details

Target:	WNT3A
Alternative Name:	Wingless Type MMTV Integration Site Family, Member 3A (WNT3A) (WNT3A Products)
Pathways:	WNT Signaling , Regulation of Muscle Cell Differentiation , Regulation of Cell Size , Positive

Target Details

Regulation of Endopeptidase Activity

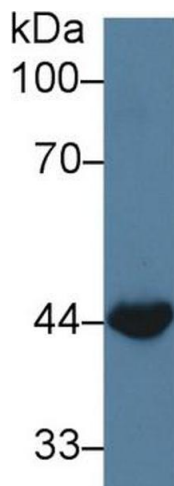
Application Details

Application Notes:	<ul style="list-style-type: none">Western blotting: 1:50-400 Immunocytochemistry in formalin fixed cells: 1:50-500 Immunohistochemistry in formalin fixed frozen section: 1:50-500 Immunohistochemistry in paraffin section: 1:10-100 Enzyme-linked Immunosorbent Assay: 1:100-1:5000 Optimal working dilutions must be determined by end user.
Comment:	The thermal stability is described by the loss rate. The loss rate was determined by accelerated thermal degradation test, that is, incubate the protein at 37°C for 48h, and no obvious degradation and precipitation were observed. The loss rate is less than 5% within the expiration date under appropriate storage condition.
Restrictions:	For Research Use only

Handling

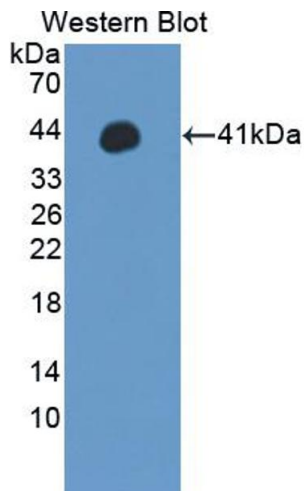
Format:	Liquid
Concentration:	Lot specific
Buffer:	PBS, pH 7.4, containing 0.02 % Sodium azide, 50 % glycerol.

Images



Western Blotting

Image 1. Western Blot; Sample: Bovine Small intestine lysate; Primary Ab: 3µg/ml Rabbit Anti-Bovine WNT3A Antibody Second Ab: 0.2µg/mL HRP-Linked Caprine Anti-Rabbit IgG Polyclonal Antibody (Catalog: SAA544Rb19)



Western Blotting

Image 2. Figure. Western Blot; Sample: Recombinant protein.