

Datasheet for ABIN5014543  
**anti-ERCC2 antibody (AA 404-637)**



[Go to Product page](#)

2 Images

## Overview

Quantity:	100 µL
Target:	ERCC2
Binding Specificity:	AA 404-637
Reactivity:	Human
Host:	Rabbit
Clonality:	Polyclonal
Conjugate:	This ERCC2 antibody is un-conjugated
Application:	Western Blotting (WB), Immunohistochemistry (IHC), Immunocytochemistry (ICC)

## Product Details

Immunogen:	XPB (Ala404-Leu637)
Isotype:	IgG
Specificity:	The antibody is a rabbit polyclonal antibody raised against XPB. It has been selected for its ability to recognize XPB in immunohistochemical staining and western blotting.
Purification:	Antigen-specific affinity chromatography

## Target Details

Target:	ERCC2
Alternative Name:	Xeroderma Pigmentosum, Complementation Group D (XPB) ( <a href="#">ERCC2 Products</a> )
Background:	Alternative Names: CXPB, BTF2 p80, EM9, TTD, ERCC2, TFIIH basal transcription factor

Target Details

	complex 80 kDa, De Sanctis-Cacchione, Excision Repair Cross-Complementing Rodent Repair Deficiency 2
Pathways:	DNA Damage Repair

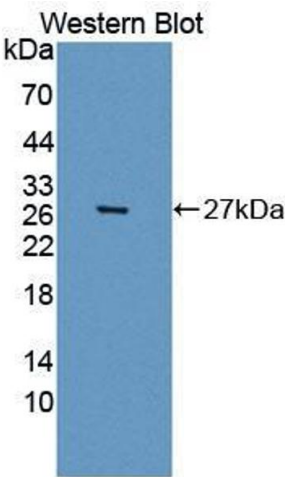
Application Details

Application Notes:	<ul style="list-style-type: none"><li>Western blotting: 1:50-400 Immunocytochemistry in formalin fixed cells: 1:50-500 Immunohistochemistry in formalin fixed frozen section: 1:50-500 Immunohistochemistry in paraffin section: 1:10-100 Enzyme-linked Immunosorbent Assay: 1:100-1:5000 Optimal working dilutions must be determined by end user.</li></ul>
Comment:	The thermal stability is described by the loss rate. The loss rate was determined by accelerated thermal degradation test, that is, incubate the protein at 37&degC for 48h, and no obvious degradation and precipitation were observed. The loss rate is less than 5% within the expiration date under appropriate storage condition.
Restrictions:	For Research Use only

Handling

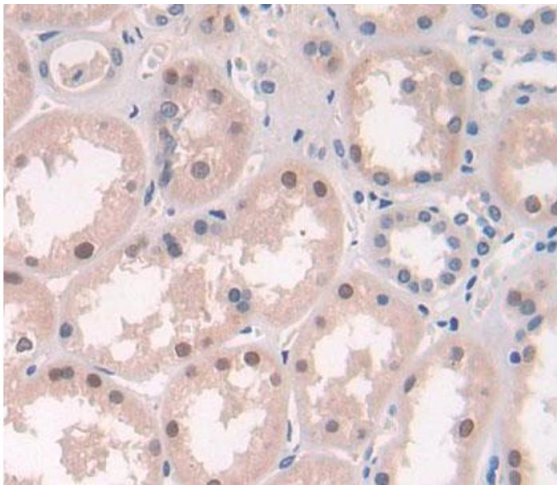
Format:	Liquid
Concentration:	Lot specific
Buffer:	PBS, pH 7.4, containing 0.02 % Sodium azide, 50 % glycerol.

Images



**Western Blotting**

**Image 1.** Figure. Western Blot; Sample: Recombinant protein.



#### Immunohistochemistry

**Image 2.** Used in DAB staining on formalin fixed paraffin-embedded Kidney tissue