



Datasheet for ABIN5022257

Tamoxifen Citrate



[Go to Product page](#)

1 Image

Overview

Quantity: 100 mg

Product Details

Purpose: Autophagy inducer

Purity: $\geq 99\%$

Chemical Name: (2)-2-[4-(1,2-Diphenyl-1-butenyl)phenoxy]-N,N-dimethylethanamine citrate

Formula: $C_{26}H_{29}NO \cdot C_6H_8O_7$

Solubility: Soluble in methanol (50 mg/ml) or ethanol; very slightly soluble in water or acetone.

Target Details

Molecular Weight: 563.65

CAS-No: 54965-24-1

Application Details

Comment: Source: Synthetic .
Appearance: White to off-white powder

Restrictions: For Research Use only

Handling

Format: Powder

Precaution of Use: Classification: D2A- Very Toxic Material Causing Other Toxic Effects, Teratogen, Carcinogen,

Handling

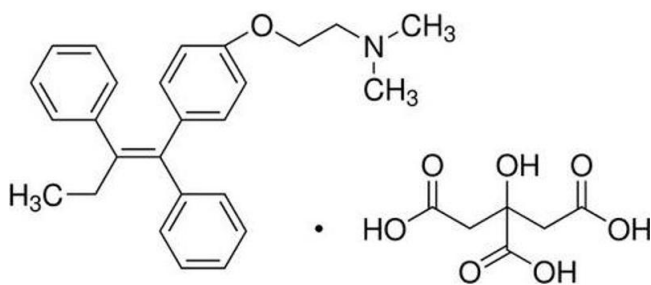
Reproductive hazard Safety Phrases: S22 - Do not breathe dust. S24/25 - Avoid contact with skin and eyes. S36/37/39 - Wear suitable protective clothing, gloves and eye/face protection.
Hazard statements: H302- Harmful if swallowed. H350- May cause cancer. H360- May damage fertility or the unborn child. Precautionary statements: P201- Obtain special instructions before use. P308 + P313- IF exposed or concerned: Get medical advice/ attention.

Handling Advice:

Classification: D2A- Very Toxic Material Causing Other Toxic Effects, Teratogen, Carcinogen,
Reproductive hazard Safety Phrases: S22 - Do not breathe dust. S24/25 - Avoid contact with skin and eyes. S36/37/39 - Wear suitable protective clothing, gloves and eye/face protection.
Hazard statements: H302- Harmful if swallowed. H350- May cause cancer. H360- May damage fertility or the unborn child. Precautionary statements: P201- Obtain special instructions before use. P308 + P313- IF exposed or concerned: Get medical advice/ attention.

Storage: -20 °C

Images



Molecule

Image 1. Chemical structure of Tamoxifen Citrate , a Autophagy inducer. CAS #: 54965-24-1. Molecular Formula: C₂₆H₂₉NO.C₆H₈O₇. Molecular Weight: 563.65 g/mol.