

Datasheet for ABIN5022275

**Wortmannin****1** Image[Go to Product page](#)

## Overview

Quantity: 1 mg

Application: Inhibition (Inh)

## Product Details

Purpose: Autophagy inhibitor

Purity:  $\geq 98\%$ 

Chemical Name: SL-2052, KY12420

Formula:  $C_{23}H_{24}O_8$ 

Solubility: Soluble in DMSO (50 mg/ml), methanol (5 mg/ml) or 100% ethanol (25 mg/ml).

## Target Details

Molecular Weight: 428.44

CAS-No: 19545-26-7

## Application Details

Comment: Source: Synthetic .  
Appearance: White to off-white solid.

Restrictions: For Research Use only

## Handling

Format: Solid

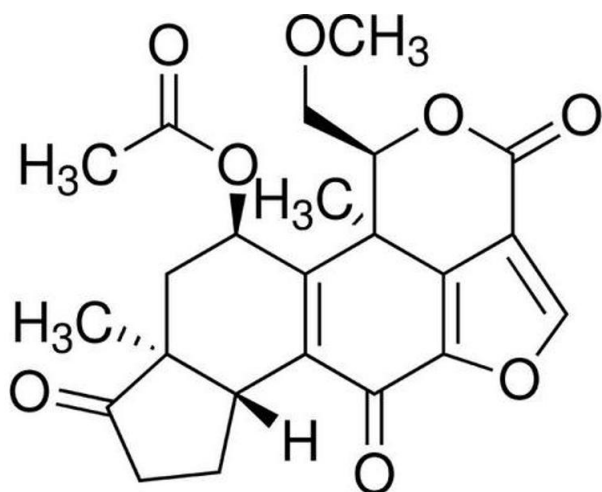
## Handling

Precaution of Use: Classification: D1A- Very Toxic Material Causing Immediate and Serious Toxic Effects, Highly toxic by ingestion, Highly toxic by skin absorption Safety Phrases: S22 - Do not breathe dust. S24/25 - Avoid contact with skin and eyes. S36/37/39 - Wear suitable protective clothing, gloves and eye/face protection. Hazard statements: H300 + H310- Fatal if swallowed or in contact with skin H330- Fatal if inhaled. Precautionary statements: P260- Do not breathe dust/ fume/ gas/ mist/ vapours/ spray. P264- Wash hands thoroughly after handling. P280- Wear protective gloves/ protective clothing. P284- Wear respiratory protection. P302 + P350- IF ON SKIN: Gently wash with plenty of soap and water. P310- Immediately call a POISON CENTER or doctor/ physician.

Handling Advice: Classification: D1A- Very Toxic Material Causing Immediate and Serious Toxic Effects, Highly toxic by ingestion, Highly toxic by skin absorption Safety Phrases: S22 - Do not breathe dust. S24/25 - Avoid contact with skin and eyes. S36/37/39 - Wear suitable protective clothing, gloves and eye/face protection. Hazard statements: H300 + H310- Fatal if swallowed or in contact with skin H330- Fatal if inhaled. Precautionary statements: P260- Do not breathe dust/ fume/ gas/ mist/ vapours/ spray. P264- Wash hands thoroughly after handling. P280- Wear protective gloves/ protective clothing. P284- Wear respiratory protection. P302 + P350- IF ON SKIN: Gently wash with plenty of soap and water. P310- Immediately call a POISON CENTER or doctor/ physician.

Storage: -20 °C

## Images



### Molecule

**Image 1.** Chemical structure of Wortmannin , a Autophagy inhibitor. CAS #: 19545-26-7. Molecular Formula: C<sub>23</sub>H<sub>24</sub>O<sub>8</sub>. Molecular Weight: 428.44 g/mol.