



Datasheet for ABIN5022284

Rottlerin



[Go to Product page](#)

1 Image

Overview

Quantity: 10 mg

Product Details

Purpose: Autophagy inducer

Purity: $\geq 98\%$

Chemical Name: 3'-[(8-Cinnamoyl-5,7-dihydroxy-2,2-dimethyl-2H-1-benzopyran-6-yl)methyl]-2',4',6'-trihydroxy-5'-methylacetophenone

Formula: C₃₀H₂₈O₈

Solubility: Soluble to 2 mM in ethanol and to 20 mM in DMSO.

Target Details

Molecular Weight: 516.55

CAS-No: 82-08-6

Application Details

Comment: Source: Synthetic .
Appearance: Orange to brown solid.

Restrictions: For Research Use only

Handling

Format: Solid

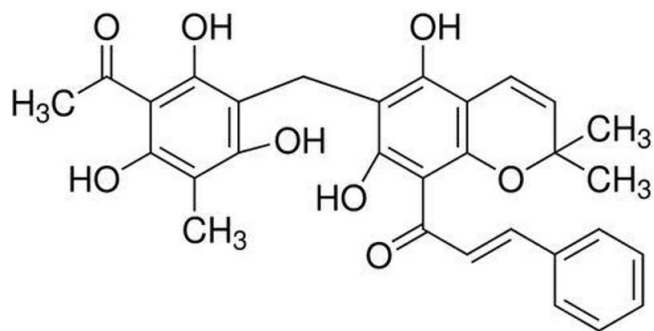
Handling

Precaution of Use: Classification: Not WHMIS controlled. Safety Phrases: S22 - Do not breathe dust. S24/25 - Avoid contact with skin and eyes. S36/37/39 - Wear suitable protective clothing, gloves and eye/face protection.

Handling Advice: Classification: Not WHMIS controlled. Safety Phrases: S22 - Do not breathe dust. S24/25 - Avoid contact with skin and eyes. S36/37/39 - Wear suitable protective clothing, gloves and eye/face protection.

Storage: -20 °C

Images



Molecule

Image 1. Chemical structure of Rottlerin, a Autophagy inducer. CAS #: 82-08-6. Molecular Formula: C₃₀H₂₈O₈. Molecular Weight: 516.55 g/mol.