

Datasheet for ABIN5022863

## C8 Ceramide

### 1 Image



[Go to Product page](#)

### Overview

Quantity: 5 mg

### Product Details

Purpose: Protein kinase activator

Purity:  $\geq 98\%$  (TLC)

Chemical Name: C8-Ceramide

Formula: C<sub>26</sub>H<sub>51</sub>N<sub>3</sub>O<sub>3</sub>

Solubility: Soluble in DMSO (25 mg/ml) or 100% ethanol (25 mg/ml)

### Target Details

Molecular Weight: 425.7

CAS-No: 74713-59-0

### Application Details

Comment: Source: Synthetic.

Appearance: White waxy solid

Restrictions: For Research Use only

### Handling

Format: Solid

Precaution of Use: Classification: Not a hazardous substance or mixture. Safety Phrases: S22 - Do not breathe

## Handling

dust. S24/25 - Avoid contact with skin and eyes. S36/37/39 - Wear suitable protective clothing, gloves and eye/face protection.

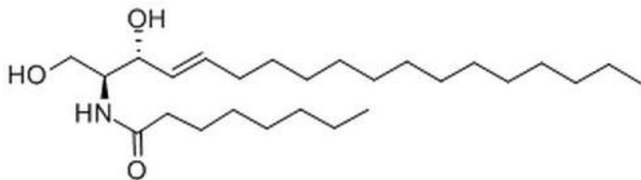
### Handling Advice:

Classification: Not a hazardous substance or mixture. Safety Phrases: S22 - Do not breathe dust. S24/25 - Avoid contact with skin and eyes. S36/37/39 - Wear suitable protective clothing, gloves and eye/face protection.

### Storage:

-20 °C

## Images



### Molecule

**Image 1.** Chemical structure of C8 Ceramide, a Protein kinase activator. CAS #: 74713-59-0. Molecular Formula: C<sub>26</sub>H<sub>51</sub>NO<sub>3</sub>. Molecular Weight: 425.7 g/mol.