

Datasheet for ABIN5023271
anti-BIM antibody (HRP)[Go to Product page](#)

2 Images

Overview

Quantity:	100 µg
Target:	BIM (BCL2L11)
Reactivity:	Human
Host:	Rabbit
Clonality:	Polyclonal
Conjugate:	This BIM antibody is conjugated to HRP
Application:	Western Blotting (WB), Immunofluorescence (IF), Immunocytochemistry (ICC)

Product Details

Immunogen:	Internal central amino acids of human Bim
Specificity:	Detects ~23 kDa.
Cross-Reactivity:	Human, Mouse, Rat
Purification:	Protein A Purified

Target Details

Target:	BIM (BCL2L11)
Alternative Name:	BIM (BCL2L11 Products)
Background:	Members in the Bcl-2 family are critical regulators of apoptosis by either inhibiting or promoting cell death. Bim/BOD is a group of three splice variants, BimEL, BimL and BimS, with apparent molecular masses of ~23, 16, and 13 kDa, respectively. Bcl-2 homology 3 (BH3) domain is a potent death domain. BH3 domain containing pro-apoptotic proteins, including Bad, Bax, Bid,

Target Details

Bim, and Hrk, form a growing subclass of the Bcl-2 family. A novel BH3 domain containing protein was recently identified and designated Bim or BOD in human, mouse and rat (1,2). Bim/BOD interacts with diverse members in the pro-survival Bcl-2 sub-family including Bcl-2, Bcl-xL and Bcl-w. Bim/BOD induces apoptosis. The messenger RNA of Bim is ubiquitously expressed in multiple tissues and cell lines (1,2).

Gene ID: 10018

NCBI Accession: [NP_619527](#)

UniProt: [O43521](#)

Pathways: [PI3K-Akt Signaling](#), [Neurotrophin Signaling Pathway](#), [Tube Formation](#), [Positive Regulation of Endopeptidase Activity](#)

Application Details

Application Notes:

- WB (1:400)
- ICC/IF (1:100)
- optimal dilutions for assays should be determined by the user.

Comment: 2.5 µg/ml of ABIN5023271 was sufficient for detection of Bim in 20 µg of K562 cell lysate by colorimetric immunoblot analysis using Goat anti-rabbit IgG:HRP as the secondary antibody.

Restrictions: For Research Use only

Handling

Format: Liquid

Concentration: 1 mg/mL

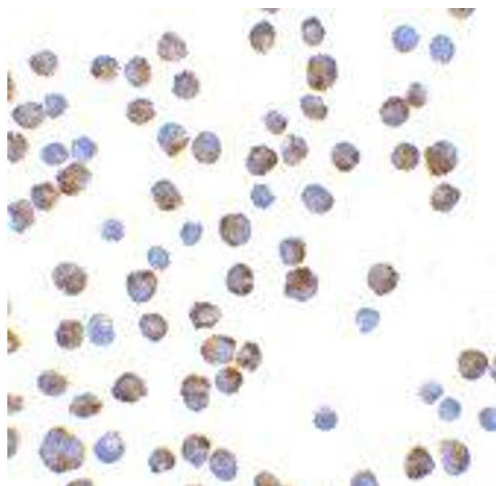
Buffer: PBS, 50 % glycerol, 0.09 % sodium azide, Storage buffer may change when conjugated

Preservative: Sodium azide

Precaution of Use: This product contains Sodium azide: a POISONOUS AND HAZARDOUS SUBSTANCE which should be handled by trained staff only.

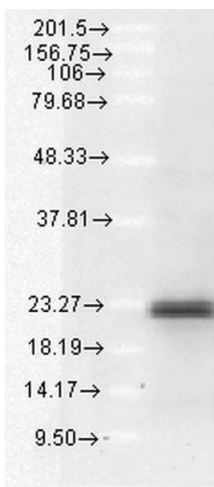
Storage: 4 °C

Storage Comment: Conjugated antibodies should be stored at 4°C



Immunofluorescence (fixed cells)

Image 1. Immunocytochemistry/Immunofluorescence analysis using Rabbit Anti-BIM Polyclonal Antibody . Tissue: K562 cells. Species: Human. Primary Antibody: Rabbit Anti-BIM Polyclonal Antibody at 1:100.



Western Blotting

Image 2. Western blot analysis of Human A549 cell lysates showing detection of BIM protein using Rabbit Anti-BIM Polyclonal Antibody . Load: 15 µg protein. Block: 1.5% BSA for 30 minutes at RT. Primary Antibody: Rabbit Anti-BIM Polyclonal Antibody at 1:1000 for 2 hours at RT. Secondary Antibody: Donkey Anti-Rabbit IgG: HRP for 1 hour at RT.