

Datasheet for ABIN5027081
anti-CD11c antibody (AA 620-835)



[Go to Product page](#)

1 Image

Overview

Quantity:	100 µg
Target:	CD11c (ITGAX)
Binding Specificity:	AA 620-835
Reactivity:	Human
Host:	Mouse
Clonality:	Monoclonal
Conjugate:	This CD11c antibody is un-conjugated
Application:	Flow Cytometry (FACS), Immunohistochemistry (IHC)

Product Details

Immunogen:	A partial length recombinant CD11c protein (amino acids 620-835) was used as the immunogen for this antibody.
Clone:	ABM4C58
Isotype:	IgG2b kappa
Purification:	Protein G Chromatography

Target Details

Target:	CD11c (ITGAX)
Alternative Name:	CD11c (ITGAX Products)
Background:	CD11c/CD18 (p150/95, or complement receptor 4, CR4) is a monocyte/macrophage-enriched

Target Details

integrin that has been reported to bind to a variety of ligands. These include cell surface proteins (LPS, ICAM-1, ICAM-2, ICAM-4 and VCAM-1), extracellular matrix proteins (collagen I), and soluble ligands (iC3b, heparin and fibrinogen). It is expressed in macrophages, monocytes, granulocytes, subsets of T and B cells, and dendritic cells. CD11c functions as a cell surface receptor for numerous soluble factors and proteins. The interaction mediates leukocyte interactions with other cell types and is a signal transducing receptor. It is found primarily on myeloid cells, where its expression is regulated both during differentiation and during monocyte maturation into tissue macrophages.

Gene ID: 3687

UniProt: [P20702](#)

Pathways: [Complement System](#), [Activated T Cell Proliferation](#), [Integrin Complex](#)

Application Details

Application Notes: IHC: 5-10 µg/mL FACS: 0.5 - 1 µg//10⁶ cells

Restrictions: For Research Use only

Handling

Concentration: 0.5 mg/mL

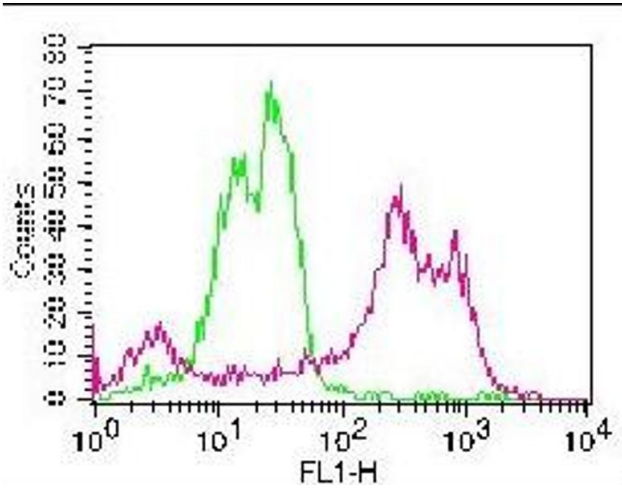
Buffer: PBS containing 0.05 % BSA, PH 7.4

Preservative: Sodium azide

Precaution of Use: This product contains Sodium azide: a POISONOUS AND HAZARDOUS SUBSTANCE which should be handled by trained staff only.

Storage: 4 °C/-20 °C

Storage Comment: Store the antibody at 4°C, stable for 6 months. For long-term storage, store at -20°C. Avoid repeated freeze and thaw cycles.



Flow Cytometry

Image 1.