

Datasheet for ABIN5027114

**anti-CLEC12A antibody (AA 150-250)**[Go to Product page](#)**1** Image

## Overview

Quantity:	100 µg
Target:	CLEC12A
Binding Specificity:	AA 150-250
Reactivity:	Human
Host:	Rabbit
Clonality:	Polyclonal
Conjugate:	This CLEC12A antibody is un-conjugated
Application:	Western Blotting (WB)

## Product Details

Immunogen:	A partial length recombinant CLEC12A/MICL protein (amino acids 150-250) was used as the immunogen for this antibody.
Isotype:	IgG
Purification:	Protein A Chromatography

## Target Details

Target:	CLEC12A
Alternative Name:	CLEC12A/MICL ( <a href="#">CLEC12A Products</a> )
Molecular Weight:	32 kDa
Gene ID:	160364

Target Details

UniProt: Q5QGZ9

Application Details

Application Notes:	WB: 2-4 µg/mL
Restrictions:	For Research Use only

Handling

Concentration:	0.5 mg/mL
Buffer:	PBS containing 0.05 % BSA, PH 7.4
Preservative:	Sodium azide
Precaution of Use:	This product contains Sodium azide: a POISONOUS AND HAZARDOUS SUBSTANCE which should be handled by trained staff only.
Storage:	4 °C/-20 °C
Storage Comment:	Store the antibody at 4°C, stable for 6 months. For long-term storage, store at -20°C. Avoid repeated freeze and thaw cycles.

Images

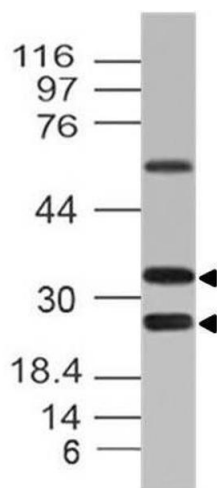


Image 1.