

Datasheet for ABIN5027126
anti-CYLD antibody (AA 1-230)



[Go to Product page](#)

1 Image

Overview

Quantity:	100 µg
Target:	CYLD
Binding Specificity:	AA 1-230
Reactivity:	Human
Host:	Rabbit
Clonality:	Polyclonal
Conjugate:	This CYLD antibody is un-conjugated
Application:	Western Blotting (WB)

Product Details

Immunogen:	A partial length recombinant CYLD protein (amino acids 1-230) was used as the immunogen for this antibody.
Isotype:	IgG
Purification:	Protein A Chromatography

Target Details

Target:	CYLD
Alternative Name:	CYLD (CYLD Products)
Background:	CYLD (Ubiquitin carboxyl-terminal hydrolase) belongs to peptidase C19 family with 956 amino acids. It is a cytoplasmic protein with three cytoskeletal-associated protein-glycine-conserved (CAP-GLY) domains which function as a deubiquitinating enzyme which specifically cleaves

Target Details

'Lys-63'-linked polyubiquitin chains and 1 ubiquitin-specific proteases (USP) domain. CYLD plays an important role in the regulation of pathways leading to NF-kappa-B activation, proliferation and differentiation. It also interacts with (via CAP-Gly domain) IKBKG/NEMO (via proline-rich C-terminal region). CYLD is important for the survival of immature natural killer cells whereas it is not required for the maturation of intrathymic natural killer cells. It is detected in fetal brain, testis and skeletal muscle, and at a lower level in adult brain, leukocytes, liver, heart, kidney, spleen, ovary and lung. Isoform 2 is found in all tissues except kidney. CYLD related diseases are multiple familial trichoepithelioma 1 and familial cylindromatosis.

Molecular Weight:	105 kDa
Gene ID:	1540
UniProt:	Q9NQC7
Pathways:	Apoptosis , Activation of Innate immune Response

Application Details

Application Notes:	WB: 2-4 µg/mL
Restrictions:	For Research Use only

Handling

Concentration:	0.5 mg/mL
Buffer:	PBS containing 0.05 % BSA, PH 7.4
Preservative:	Sodium azide
Precaution of Use:	This product contains Sodium azide: a POISONOUS AND HAZARDOUS SUBSTANCE which should be handled by trained staff only.
Storage:	4 °C/-20 °C
Storage Comment:	Store the antibody at 4°C, stable for 6 months. For long-term storage, store at -20°C. Avoid repeated freeze and thaw cycles.

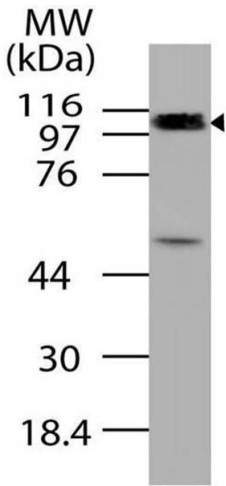


Image 1.