

Datasheet for ABIN5027148
anti-DLL3 antibody (AA 62-286)



[Go to Product page](#)

1 Image

Overview

Quantity:	100 µg
Target:	DLL3
Binding Specificity:	AA 62-286
Reactivity:	Human
Host:	Rabbit
Clonality:	Polyclonal
Conjugate:	This DLL3 antibody is un-conjugated
Application:	Western Blotting (WB)

Product Details

Immunogen:	A partial length recombinant Delta like 3 protein (amino acids 62-286) was used as the immunogen for this antibody.
Isotype:	IgG
Purification:	Protein A Chromatography

Target Details

Target:	DLL3
Alternative Name:	Delta like 3 (DLL3 Products)
Background:	Delta like 3 (DLL3) is a member of Delta/Serrate/Lag2 (DSL) ligands for Notch receptors and plays a role in Notch signaling. Out of Five DSL ligands, DLL3 is the most structurally divergent DSL ligand. DLL3 is expressed throughout the presomitic mesoderm and is localized to the

Target Details

	rostral somatic compartments. Homozygous disruptions of Notch1 and DLL3 result in severe abnormalities in somitogenesis. Mutations in the human DLL3 homolog cause recessive skeletal abnormalities in spondylocostal dysostosis with a consistent pattern of abnormal segmentation.
Molecular Weight:	65 kDa
Gene ID:	10683
UniProt:	Q9NYJ7
Pathways:	Notch Signaling

Application Details

Application Notes:	WB: 2-4 µg/mL
Restrictions:	For Research Use only

Handling

Concentration:	0.5 mg/mL
Buffer:	PBS containing 0.05 % BSA, PH 7.4
Preservative:	Sodium azide
Precaution of Use:	This product contains Sodium azide: a POISONOUS AND HAZARDOUS SUBSTANCE which should be handled by trained staff only.
Storage:	4 °C/-20 °C
Storage Comment:	Store the antibody at 4°C, stable for 6 months. For long-term storage, store at -20°C. Avoid repeated freeze and thaw cycles.

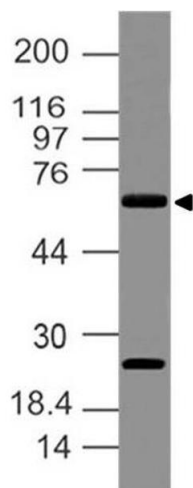


Image 1.