

Datasheet for ABIN5027362  
**anti-Siglec H antibody (AA 109-309)**[Go to Product page](#)

## 1 Image

## Overview

Quantity:	100 µg
Target:	Siglec H
Binding Specificity:	AA 109-309
Reactivity:	Mouse
Host:	Rat
Clonality:	Monoclonal
Conjugate:	This Siglec H antibody is un-conjugated
Application:	Western Blotting (WB)

## Product Details

Immunogen:	A partial length recombinant mouse Siglec-H protein (amino acids 109-309) was used as the immunogen for this antibody.
Clone:	ABM2B55
Isotype:	IgG2a kappa
Purification:	Protein G Chromatography

## Target Details

Target:	Siglec H
Alternative Name:	Siglec-H ( <a href="#">Siglec H Products</a> )
Background:	Siglec H (Sialic acid binding Ig-like lectin H) is cell surface protein of murine origin. Siglec H is

## Target Details

mainly distributed in eosinophils and it binds to sialic acid. Siglec H lacks tyrosine based signaling motifs in its cytoplasmic tail, which gives it a special structural identity for binding sialic acid without binding with carbohydrates. Siglec H is specifically expressed in bone marrow, spleen, blood and lymph nodes.

Molecular Weight: 33 kDa

Gene ID: 233274

UniProt: [Q3Y597](#)

## Application Details

Application Notes: WB: 2-4 µg/mL

Restrictions: For Research Use only

## Handling

Concentration: 0.5 mg/mL

Buffer: PBS containing 0.05 % BSA, PH 7.4

Preservative: Sodium azide

Precaution of Use: This product contains Sodium azide: a POISONOUS AND HAZARDOUS SUBSTANCE which should be handled by trained staff only.

Storage: 4 °C/-20 °C

Storage Comment: Store the antibody at 4°C, stable for 6 months. For long-term storage, store at -20°C. Avoid repeated freeze and thaw cycles.

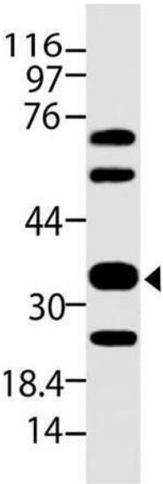


Image 1.