

Datasheet for ABIN5027382
anti-NLRP2 antibody (AA 850-1060)



[Go to Product page](#)

1 Image

Overview

Quantity:	100 µg
Target:	NLRP2
Binding Specificity:	AA 850-1060
Reactivity:	Human
Host:	Rabbit
Clonality:	Polyclonal
Conjugate:	This NLRP2 antibody is un-conjugated
Application:	Western Blotting (WB)

Product Details

Immunogen:	A partial length recombinant NALP2 protein (amino acids 850-1060) was used as the immunogen for this antibody.
Isotype:	IgG
Purification:	Protein A Chromatography

Target Details

Target:	NLRP2
Alternative Name:	NALP2 (NLRP2 Products)
Background:	NALP2 (also known as PAN1/PYPAF2) is a member of the NLR (NACHT-LRR) family which includes both NODs and NALPs. Alternative names for the NLR family include CATERPILLER, NOD and NOD-LRR. NLR family members are thought to be intracellular pathogen-recognition

Target Details

receptors (PRRs). At least fourteen NALPs have been identified in the human genome, and a common feature among NALPs 1-3, 6, and 12 is their ability to recruit the adaptor protein ASC through a homotypic PYD-PYD interaction, which in turn recruits caspase-1 through a CARD-CARD interaction. The oligomerization of NALPs is thought to bring the inflammatory caspases into close proximity leading to their activation within the inflammasome. The NALP2/3 inflammasomes contain, in addition to NALP2 or NALP3, the caspase recruitment domain (CARD)-containing protein Cardinal, ASC and caspase 1. Processing of the pro-inflammatory cytokines IL-1b and IL-18 by caspases leads to the secretion of active cytokines and elicits a potent inflammatory response. The expression of NALP2 is upregulated in THP-1 macrophage cells by LPS and certain cytokines including interferon g and b, supporting a role for NALP2 in host-defense and inflammation. Additionally, NALP2 is expressed in several human tumor cell lines. However, the endogenous expression of NALP2 varies widely among tumor cells lines, with the highest levels found in MCF-7 and MDA-MB-435 breast cancer, Caco2 colon cancer and UACC62 melanoma cells. This antibody recognizes NALP2, human NALP2 is a 1062 amino acid protein, it is specific for NALP2 does not cross-react with related family members PAN2 or NAC.

Molecular Weight:	115 kDa
Gene ID:	55655
UniProt:	Q9NX02
Pathways:	Production of Molecular Mediator of Immune Response , Positive Regulation of Endopeptidase Activity , Inflammasome

Application Details

Application Notes:	WB: 2-4 µg/mL
Restrictions:	For Research Use only

Handling

Concentration:	0.5 mg/mL
Buffer:	PBS containing 0.05 % BSA, PH 7.4
Preservative:	Sodium azide
Precaution of Use:	This product contains Sodium azide: a POISONOUS AND HAZARDOUS SUBSTANCE which should be handled by trained staff only.

Handling

Storage:	4 °C/-20 °C
Storage Comment:	Store the antibody at 4°C, stable for 6 months. For long-term storage, store at -20°C. Avoid repeated freeze and thaw cycles.

Images

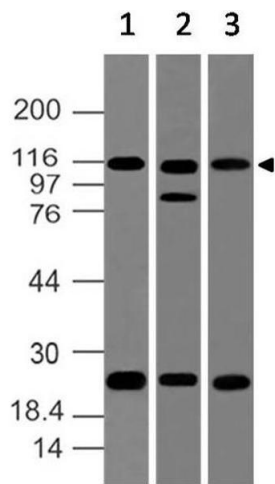


Image 1.