

Datasheet for ABIN5027557
anti-TAB3 antibody (AA 1-385)



[Go to Product page](#)

1 Image

Overview

Quantity:	100 µg
Target:	TAB3
Binding Specificity:	AA 1-385
Reactivity:	Human
Host:	Rabbit
Clonality:	Polyclonal
Conjugate:	This TAB3 antibody is un-conjugated
Application:	Western Blotting (WB)

Product Details

Immunogen:	A partial length recombinant TAB3 protein (amino acids 1-350) was used as the immunogen for this antibody.
Isotype:	IgG
Purification:	Protein A Chromatography

Target Details

Target:	TAB3
Alternative Name:	TAB3 (TAB3 Products)
Background:	TAB3 (TGF-beta activated kinase 1/MAP3K7 binding protein 3) has CUE domain and RanBP2-type zinc finger (NZF) domains mediates binding to two consecutive 'Lys-63'-linked ubiquitins. It contains 712 amino acids. TAB3 is a mediator of MAP3K7 activation and it forms a ternary

Target Details

complex with the protein kinase MAP3K7/TAK1 and either TRAF2 or TRAF6 in response to stimulation of TNF or IL-1. This successive MAP3K7/TAK1 kinase activity triggers a signaling cascade leading to activation of the NF-kappaB transcription factor and AP1 transcription factor. This protein shows interaction with TAB1, TAB2, MAP3K7, TRAF2 and TRAF6. It has 2 isoforms produced by alternative splicing. Isoform 2 may be an oncogenic factor. TAB3 involved in necrosis and tumors like disease.

Molecular Weight:	80 kDa
Gene ID:	257397
UniProt:	Q8N5C8
Pathways:	TLR Signaling , Fc-epsilon Receptor Signaling Pathway , Activation of Innate immune Response , Toll-Like Receptors Cascades

Application Details

Application Notes:	WB: 4-6 µg/mL
Restrictions:	For Research Use only

Handling

Concentration:	0.5 mg/mL
Buffer:	PBS containing 0.05 % BSA, PH 7.4
Preservative:	Sodium azide
Precaution of Use:	This product contains Sodium azide: a POISONOUS AND HAZARDOUS SUBSTANCE which should be handled by trained staff only.
Storage:	4 °C/-20 °C
Storage Comment:	Store the antibody at 4°C, stable for 6 months. For long-term storage, store at -20°C. Avoid repeated freeze and thaw cycles.

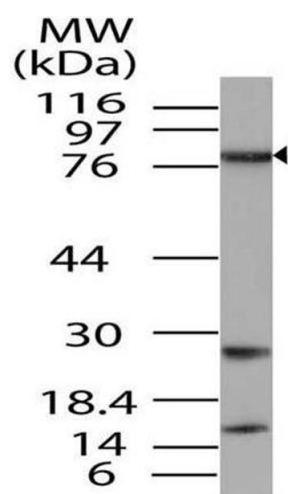


Image 1.