

Datasheet for ABIN5027569
anti-TLR10 antibody (AA 100-369)



[Go to Product page](#)

1 Image

Overview

Quantity:	100 µg
Target:	TLR10
Binding Specificity:	AA 100-369
Reactivity:	Human
Host:	Mouse
Clonality:	Monoclonal
Conjugate:	This TLR10 antibody is un-conjugated
Application:	Western Blotting (WB)

Product Details

Immunogen:	A partial length recombinant TLR10 protein (amino acids 100-369) was used as the immunogen for this antibody.
Clone:	ABM3C85
Isotype:	IgG2a kappa
Purification:	Protein G Chromatography

Target Details

Target:	TLR10
Alternative Name:	TLR10 (TLR10 Products)
Background:	TLR10 (Toll-Like Receptor10) is an orphan member of the TLR family and is the only pattern-

Target Details

recognition receptor without known ligand specificity and biological function. This protein plays a role in innate immune responses following viral infection. Influenza virus infection increased TLR10 expression and TLR10 contributed to innate immune sensing of viral infection leading to cytokine induction, including proinflammatory cytokines and interferons. Blocking TLR10 by antagonistic antibodies enhanced proinflammatory cytokine production, including IL-1Beta, specifically after exposure to TLR2 ligands. TLR10 is in a locus that also contains TLR1 and TLR6, two receptors known to function as coreceptors for TLR2. TLR10 is predominantly expressed in tissues rich in immune cells, such as spleen, lymph node, thymus, tonsil, and lung. Expression of TLR10 can be induced in B cells, dendritic cells, eosinophils, and neutrophils, as well as on nonimmune cells, such as trophoblasts.

Molecular Weight:	116 kDa
Gene ID:	81793
UniProt:	Q9BXR5
Pathways:	TLR Signaling , Activation of Innate immune Response , Toll-Like Receptors Cascades

Application Details

Application Notes:	WB: 2-4 µg/mL
Restrictions:	For Research Use only

Handling

Concentration:	0.5 mg/mL
Buffer:	PBS containing 0.05 % BSA, PH 7.4
Preservative:	Sodium azide
Precaution of Use:	This product contains Sodium azide: a POISONOUS AND HAZARDOUS SUBSTANCE which should be handled by trained staff only.
Storage:	4 °C/-20 °C
Storage Comment:	Store the antibody at 4°C, stable for 6 months. For long-term storage, store at -20°C. Avoid repeated freeze and thaw cycles.

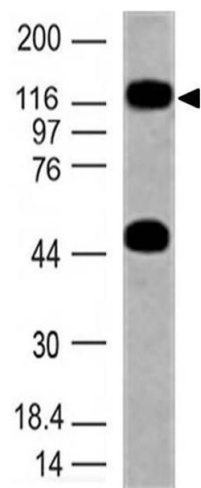


Image 1.