

Datasheet for ABIN5027591
anti-TRBP antibody (AA 150-366)



[Go to Product page](#)

1 Image

Overview

Quantity:	100 µg
Target:	TRBP (TARBP2P)
Binding Specificity:	AA 150-366
Reactivity:	Human
Host:	Rabbit
Clonality:	Polyclonal
Conjugate:	This TRBP antibody is un-conjugated
Application:	Western Blotting (WB)

Product Details

Immunogen:	A partial length recombinant TRBP protein (amino acids 150-366) was used as the immunogen for this antibody.
Isotype:	IgG
Purification:	Protein A Chromatography

Target Details

Target:	TRBP (TARBP2P)
Alternative Name:	TRBP (TARBP2P Products)
Background:	TRBP, also known as TARBP2 (TAR (HIV-1) RNA binding protein 2) is a contributory agent of acquired immunodeficiency syndrome (AIDS). TRBP binds between the bulge and the loop of the HIV-1 TAR RNA regulatory element and activates HIV-1 gene expression in synergy with the

Target Details

viral Tat protein. It also plays a role in the production of short interfering RNAs (siRNAs) from double-stranded RNA (dsRNA) by DICER1 and promotes translation of TAR-containing RNAs independently of EIF2AK2/PKR. Diseases associated with TARBP2 include acquired immunodeficiency syndrome. TARBP2 is highly expressed in adipose tissue, adrenal cortex, adrenal gland, amniotic fluid and amygdala. TRBP exists in two isoforms whereas alternate splicing results in multiple transcript variants encoding different isoforms. This gene also has a pseudogene.

Molecular Weight:	48 KDa
Gene ID:	6895
UniProt:	Q15633
Pathways:	Regulatory RNA Pathways , Ribonucleoprotein Complex Subunit Organization

Application Details

Application Notes:	WB: 6-7 µg/mL
Restrictions:	For Research Use only

Handling

Concentration:	0.5 mg/mL
Buffer:	PBS containing 0.05 % BSA, PH 7.4
Preservative:	Sodium azide
Precaution of Use:	This product contains Sodium azide: a POISONOUS AND HAZARDOUS SUBSTANCE which should be handled by trained staff only.
Storage:	4 °C/-20 °C
Storage Comment:	Store the antibody at 4°C, stable for 6 months. For long-term storage, store at -20°C. Avoid repeated freeze and thaw cycles.

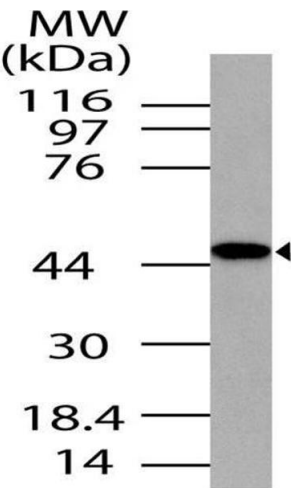


Image 1.