

Datasheet for ABIN5065970

anti-GABARAPL3 antibody (C-Term) (HRP)[Go to Product page](#)**2** Images

Overview

Quantity:	100 µg
Target:	GABARAPL3
Binding Specificity:	C-Term
Reactivity:	Human
Host:	Rabbit
Clonality:	Polyclonal
Conjugate:	This GABARAPL3 antibody is conjugated to HRP
Application:	Western Blotting (WB), Immunocytochemistry (ICC), Immunofluorescence (IF)

Product Details

Immunogen:	Synthetic peptide from the C-terminal of Human GABARAPL3
Isotype:	IgG
Specificity:	Ubiquitous. Expressed at very high levels in the brain, heart, peripheral blood leukocytes, liver, kidney, placenta and skeletal muscle. Expressed at very low levels in thymus and small intestine., Detects ~14 kDa.
Cross-Reactivity:	Human, Rat
Purification:	Peptide Affinity Purified

Target Details

Target:	GABARAPL3
---------	-----------

Target Details

Alternative Name: GABARAPL3 ([GABARAPL3 Products](#))

UniProt: [Q9BY60](#)

Application Details

Application Notes:

- WB (1:1000)
- ICC/IF (1:100)
- optimal dilutions for assays should be determined by the user.

Comment: A 1:1000 dilution of ABIN5065970 was sufficient for detection of GABARAPL3 in 15 µg of rat liver cell lysates by ECL immunoblot analysis using goat anti-rabbit IgG:HRP as the secondary antibody.

Restrictions: For Research Use only

Handling

Format: Liquid

Concentration: 1 mg/mL

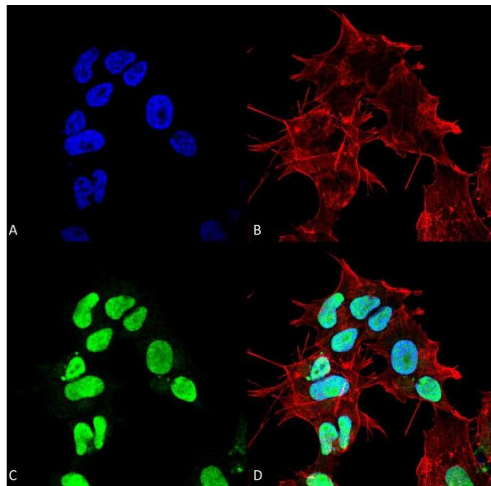
Buffer: PBS, 50 % glycerol, 0.09 % sodium azide, Storage buffer may change when conjugated

Preservative: Sodium azide

Precaution of Use: This product contains Sodium azide: a POISONOUS AND HAZARDOUS SUBSTANCE which should be handled by trained staff only.

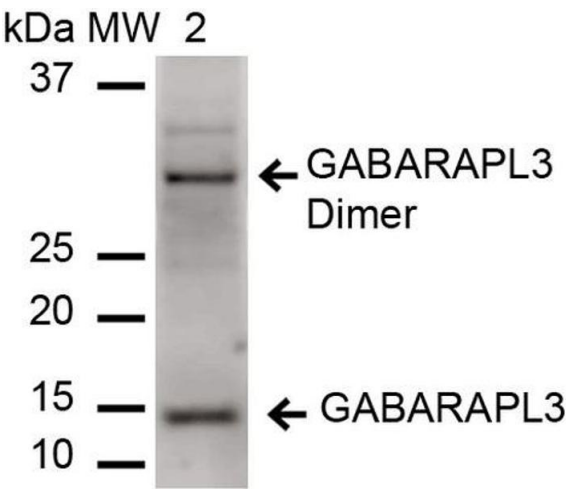
Storage: 4 °C

Storage Comment: Conjugated antibodies should be stored at 4°C



Immunofluorescence (fixed cells)

Image 1. Immunocytochemistry/Immunofluorescence analysis using Rabbit Anti-GABARAPL3 Polyclonal Antibody . Tissue: Neuroblastoma cell line (SK-N-BE). Species: Human. Fixation: 4% Formaldehyde for 15 min at RT. Primary Antibody: Rabbit Anti-GABARAPL3 Polyclonal Antibody at 1:100 for 60 min at RT. Secondary Antibody: Goat Anti-Mouse ATTO 488 at 1:200 for 60 min at RT. Counterstain: Phalloidin Texas Red F-Actin stain; DAPI (blue) nuclear stain at 1:1000, 1:5000 for 60 min at RT, 5 min at RT. Localization: Nucleoplasm, Cytosol. Magnification: 60X. (A) DAPI (blue) nuclear stain (B) Phalloidin Texas Red F-Actin stain (C) GABARAPL3 Antibody (D) Composite.



Western Blotting

Image 2. Western blot analysis of Rat Liver cell lysates showing detection of ~14 kDa GABARAPL3 protein using Rabbit Anti-GABARAPL3 Polyclonal Antibody . Lane 1: Molecular Weight Ladder (MW). Lane 2: Rat Liver cell lysates. Load: 15 µg. Block: 5% Skim Milk in 1X TBST. Primary Antibody: Rabbit Anti-GABARAPL3 Polyclonal Antibody at 1:1000 for 60 min at RT. Secondary Antibody: Goat Anti-Rabbit IgG: HRP at 1:2000 for 60 min at RT. Color Development: ECL solution for 6 min in RT. Predicted/Observed Size: ~14 kDa.